



# Product Catalogue

September 2022

<u>Index:</u>	<u>Page:</u>	<u>Index:</u>	<u>Page:</u>
Air Brakes	3	Door - Locomotive Flooring	25
Air Conditioning	4	Door - Battery Grating	25
Air Horns	5	Door - Weather Stripping	25
Alternators	5	Door - CAB	25
Axle Generators & Sensors, Speed & Temperature	6	Door - Latches & Locks	25
Air Brake - Ball Valves	6	Door - Locomotive Carbody	26
Batteries	7	Electric Semi-Conductor Tester	26
Bearings	8	Electrical - Electronic	26
Brake Handles	7	Engines	27
Brake Products	8	Engine - Power Assemblies & HLP Units	28
Brakes - Handwheel & Ratchet	9	Engine Parts Offering	29 - 30
Brushes - Carbon	10	Engine Pumps	31 - 32
Brushholders	10	Engine Gears	32
Bumpers Cab - Safety Head	11	Engine Protectors	33
Bulbs	11 - 12	Fans - Engine Cooling & Grid	33
Emergency Backup Power T8 LED Tube	13	Exhaust Products	33 - 34
Cabinets - High Voltage	13	Fasteners	34
Cabs	14	Filters	35
Cable 27 Pin MU - Receptacles & Hangers	15	Fuel Filters	36
Card Holders	15	Filters - Air Line	36
Chemical Line	16 - 19	Flexi-Filter Generic Kits	37
Seasonal Products	20	Fuses	38
Circuit Breakers	20	Fuse Holders	38
Clamps	21	Gaskets, Seals & Rubber Products	38 - 40
Contacts, Electrical Wire & Terminals	21	Gauges - Air Flow Indicator Fuel & Ammeters	40
Compressors - Air & Water	22	Gears	41
Top Deck Kits	21	Generators - Main & Auxiliary	42
Control Stands	21	Generator Drive Shafts	42
Contactors, Controllers, Relays & Modules	23	Adjustable Auxiliary Generator Drive Shaft	42
Couplers - Yokes & Draft Gears	24	Handrail - Carbody	43



# Product Catalogue

September 2022

<u>Index:</u>	<u>Page:</u>	<u>Index:</u>	<u>Page:</u>
Heat Shields	44	Starter Motors	61
Heaters	44	Snow Plow Traction Motor Brass	61
Provident H1™ High Efficiency Heater	45	Supports - Handles, Feet & Brackets	62
Hoses	44 - 46	Shims & Spacers	62
Housings	46	Support Bearing - Traction Motor Brass	63
Injectors	47	Switches	63 - 65
Insulation Testers	48	Terminal Boards	66
Journal Boxes - Hyatt & Rroller Wheel Bearings	49	Tools	66
Load Boxes	50	Traction Motors	67 - 68
Modules	50	D77-Style Traction Motor Support Items	69
Name Plate & Numbering	51	752-Style Traction Motor Support Items	70
Pipe Clamp Brackets	51	Terminal Lugs	71
Prime MFG-Sun Visors, Mirrors, Engine Protectors & Recirculating Toilets	52	Traction Motor Cables	72
Heat Exchangers Radiators, Oil Coolers, Pre- Heaters, Intercoolers & After-Coolers	52	Traction Motor Covers	73
Pins - Bushings - Sleeves Clevis - Liners, etc.	53	Truck Assemblies & Parts	74 - 76
Pressure Switches	53	- Bushings	74
Cab Support Items	53	- Center Plates, Bowl Liners & Pedestal Liners	75
Resistor Grids	53	- Coil & Elliptical Leaf Springs	75
Roots Blowers	54	- Gearcases	76
Rocker Arms & Valve Bridges	54		
Sand Nozzles	55		
Sand Related	55		
Safety Products	55 - 58		
Seats	59		
Slack Adjusters	59		
Simulators	59		
Snubbers - Shock Absorbers - Dampers	60		
Spark Arrestors	60		



# BRYTE CHOICE | AFRICA

INTERNATIONAL IMPORTERS AND EXPORTERS OF ENGINEERING MERCHANDISE  
SINCE 1986

## AIR BRAKES

**Complete line of 26L Air Brakes - New and Unit Exchange**

<u>P/N</u>	<u>Portion Mounting Gaskets</u>
8034030	H5 Relay Air Valve
40060576	J-1 Relay Valve
40017143	F-1 Selector Valve
40005088	MU-2A Valve
9567871	Quick Rel. Valve (26F)
W557924	Service Portion (26F)
9563583	26C Brake Valve
W557237	26L Brake Valve
9573051	P2A Appl. Brake Valve
40005089	A-1 Charge. Cut-Off Valve
W554061	J-1.4-14 & J-1.6-16
W97368	Relay J-1 Relay Valve
9566234	KM2 Vent Valve
6956120	DT3A Check Valve



PRD16185288 - 26L Air Brake



Packing Cup Replacements

- P/N Packing Cups
- W524478 2" Packing Cup
  - W501863 3 1/2" Packing Cup
  - W513750 5" Packing Cup
  - W501530 6" Packing Cup
  - W96556 8" Packing Cup
  - 8062832 9" Packing Cup
  - 8047865 10" Packing Cup
  - 8057546 11" Packing Cup
  - W99882 12" Packing Cup



3N1 Freight Valve



W660999 - Angle Cock



Single Car Tester



Air Hose - See Page 43



Brake Shoes - See Page 7



**AIR CONDITIONING**

**ORANGE** Split Type Air Conditioner Systems:

32K BTU for Switchers and 42K BTU for Road Units.

The Orange is the **ONLY** direct 72V DC driven Locomotive Cab Air Conditioning System that **DOES NOT NEED AN INVERTER**.

Running directly off the locomotive's batteries and using VRF(Variable Refrigerant Flow) technology, the Orange will save up to 30% in energy consumption while reducing power surges in the 72V DC system. Our compact split-system components can be custom configured to fit any cab without looking like a retrofit.

Patent Pending Design:

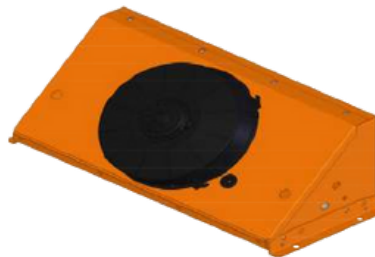
Breakthrough proven technology used in both off-road vehicles and MOW vehicles. Our new AC unit offers a compact, reliable, and brushless system while eliminating the Inverter known for major failures. The AC unit's lightweight and modular design offers the end user the option of easy maintenance by replacing any of the three major components on a UX (Unit Exchange) Basis.



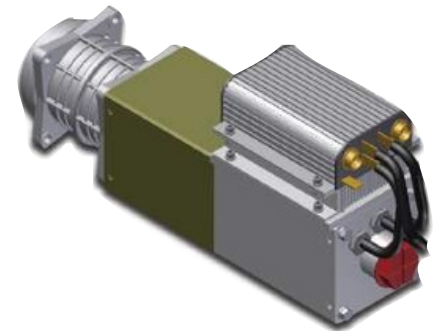
Evaporator - Air Handler



32,000 BTU Condenser for Switchers



42,000 BTU Condenser for Road Units



Compressor - 72V Brushless Motor. NO Inverter!

Specifications and Features

Evaporators (Weight 10lbs)	Achieving a cooling capacity of 32,000 BTU and an AMP draw at max load of 60A, with adjustable airflow and temperature controls
Refrigerant System	Non Ozone depleting refrigerant, type R134a, sealed systems (eliminates need for refrigeration techs for installation)
72V DC Power	Directly from the locomotives electrical systems battery-bank and/or Auxiliary Generator (Operating Voltage 68V to 74V DC)
Condenser/Compressor Weights	32,000 BTU 24lbs./60lbs. 42,000 BTU 24lbs./46lbs.



# BRYTE CHOICE | AFRICA

INTERNATIONAL IMPORTERS AND EXPORTERS OF ENGINEERING MERCHANDISE  
SINCE 1986

## AIR HORNS

Complete Line of Air Horns, Air Horn Covers and All Related Parts



P/N	Description
K1LAR	1 Chime
LR2 K5LAR24	3 Chime Regular
WH-SA-110	5 Chime Regular
WH-SA-112	Diaphragm Kit 3 Chime
8185843	Diaphragm Kit 5 Chime
	Rubber Mount for Roof

P/N	Description
Cover Blue 4 3/4"	Cloth - Air Horn Bell
Cover Blue 6 1/4"	Cloth - Air Horn Bell
Cover Blue 8"	Cloth - Air Horn Bell
Cover Blue 9"	Cloth - Air Horn Bell
Cover Blue 11"	Cloth - Air Horn Bell
Cover Set K3SET	Cloth - Air Horn Set 3 Chime
Cover Set K5SET	Cloth - Air Horn Set 5 Chime
P36945	CDF Stainless 3 Chime
P36935	CDF Stainless 5 Chime



Cloth and Stainless Air Horn Covers provide protection from weather and elements

28 - 90 Volt DC Electronic Bell  
P/N: PRDEBELL82  
with 30 Ft Harness

- Sound level: 85dB(A) at 50ft
- Adjustable Intensity & Loudness
- Weather Resistant Speaker
- 125 Rings per Minute
- Operating temperatures range from -40°F to 158°F

\*We also carry a full line of Horn Valves and other related parts.

## ALTERNATORS

Complete Line of "True Blue™" Main Alternators & Exciters



- Style
- AR10
- AR11
- AR15
- AR16
- AR17
- TA17
- AR20
- GTA11
- GTA24



### Other Related Items

- 40029131 Diode Negative
- 40029132 Diode Positive
- 8378316 Diode Boot AR10
- 8361524 Diode Socket
- 40032602 Diode Positive AR20
- 40032603 Diode Negative AR20
- 40048214 Diode Boot AR20
- 8434285 Spring Clip AR10
- 8434286 Spring Clip D14
- 40132923 Spring Clip TA17
- 9084995 Rectifier Bank 2000V
- 8413188 Brushholder D14
- 8413189 Brushholder TA17
- 8167423 Glass Oval AR10 6" x 12.13/16"
- 8489788 Weather-stripping
- 8345780 Glass Inspection Air Box
- 8433679 Glass Diode Inspection
- 8167425 Weather-Stripping
- 8169637 Filler
- 8330890 Brushholder Clip U Shape
- 8345866 Slip Ring Assly
- 8390572 AR10 Closure



# BRYTE CHOICE | AFRICA

INTERNATIONAL IMPORTERS AND EXPORTERS OF ENGINEERING MERCHANDISE  
SINCE 1986

## AXLE GENERATORS & SENSORS, SPEED & TEMPERATURE

Complete Line of Axle Alternators, Transducers and Sensors

Description	P/N		Shaft with Coupling Part #	Length	Spade Part #	Coupling Part #
Axle Alternator	9319132		G41B550222G3	4 1/16"	G492A173G4	G41A250225P1
Sensor SD70	40063597		G41B550222G1	4 7/16"	G492A173G2	G41A250225P1
Sensor Speed SD70	40121230		G41B550222G4	4 3/4"	G492A173G5	G41A250225P1
Sensor Temperature	40021658		G41B550222G8	7 17/32"	G41A251988G3	G41A250225P1
Sensor Temperature	40029233		G41B550222G2	6 1/4"	G492A173G3	G41A250225P1
Sensor Temperature	40134844		G41B550222G11	6 3/4"	G41A257468G1	G41A250225P1
Sensor Oil	40063567		G41B550222G5	7 3/16"	G492A173G6	G41A250225P1
Sensor Radar K Band	40081692		G41B550222G7	10 3/8"	G41A251988G2	G41A250225P1
Axle Alternator	G17MM24F1		G41B550222G6	9 1/16"	G41A251988G1	G41A250225P1
Axle Alternator	G17MM24AF1		G41B550222G10	5 3/16"	G41A251988G5	G41A250225P1
Traction Sensor	G17MM102F3		G41B550222G9	10 13/32"	G41A251988G4	G41A250225P1
Speed Sensor	G17MM57H401					
Traction Sensor	G17MM103					
Sensor Temperature	G41A296328AAP					
Axle Generator	40026403					
Axle Generator Kit	40039172					
60 Pulse Axle Generator	Q1164					
Q-Tron 120 PPR Axle Generator	PQ93262					

Part #	Pipe Size	Porting	Vent	Position		Plain / Locking	Handle Length
				Open	Closed		
8454218	3/4"	Standard	7/32" B	90°	0°	Plain	1 3/4"
8452907	3/8"	Full	5/64" B	0°	0°	Plain	3 3/4"
8363508	1 1/4"	Full	-	180°	90°	Locking	7 1/4"
8458815	1 1/2"	Standard	-	0°	270°	Wrench	-
8354227	1 1/4"	Standard	-	0°	90°	Plain	4"
8409024	1 1/2"	Standard	-	0°	90°	Locking	5 1/8"
8351610	1/2"	Full	-	90°	0°	Locking	3 1/8"
8419531	1/2"	Full	3/32" B	90°	0°	Locking	3 1/8"
8363655	3/4"	Full	-	90°	0°	Locking	3 1/8"
8351609	1"	Full	-	90°	0°	Locking	5 1/8"
9332599	1 1/4"	Full	1/8" B	90°	0°	Locking	5 1/8"
8412325	1"	Full	1/8" B-NPT	90°	0°	Locking	5 1/8"
8423393	3/4"	Standard	1/4" B-NPT	90°	0°	Locking	3 1/8"
8467908	3/4"	Full	3/32" B	90°	0°	Locking	3 1/8"
8451783	1"	Full	1/8" B	0°	90°	Locking	5 1/8"
8365217	1 1/4"	Full	-	270°	0°	Plain	5 13/16"
8351608	3/8"	Full	-	90°	0°	Plain	1 1/2"
8463756	1 1/2"	Standard	-	0°	90°	Plain	4"
10538664	3/8"	Full	-	0°	90°	Locking Sealed	3 1/8"
9569220	3/4"	Full	-	90°	0°	Plain	4 7/16"
8365777	1/2"	Standard	-	0°	90°	Plain	3 3/4"
40014305	1 1/4"	Full	-	90°	0°	Locking	5 1/8"

## AIR BRAKE - BALL VALVES

Air Brake Ball Valves for Locomotives



- Teflon Seats
- Chrome Plated Balls
- Stainless Springs
- Zinc Plated Handles
- Self Tapped Bodies



# BRYTE CHOICE | AFRICA

INTERNATIONAL IMPORTERS AND EXPORTERS OF ENGINEERING MERCHANDISE  
SINCE 1986

## BATTERIES

### Complete Line of Locomotive Switcher and Road Batteries

Part#	20 HR	8 HR	Length	Width	Height	Weight
<b>8 Volt 4 Cell Series</b>						
P8HHG31PR	344	282	27	8	11 7/8	167
P8EHG31PR	410	336	27	8	12 3/4	178
P8NS23PR	430	352	28 1/4	8 1/4	18 1/4	242
P8CH23PR	582	477	28 1/4	8 1/4	18 1/4	256
P8NS33PR	625	512	28 1/4	11 1/4	18 1/4	352
P8CH33PR	846	694	28 1/4	11 1/4	18 1/4	414
<b>32 Volt 16 Cell Series Unitized Series</b>						
P16CH25PR	635	521	33 2/3	27	20 1/2	1238
P16CH33PR	846	694	43	27	20	1609



**3 Year Warranty 36  
Lbs 8.5 x 10**

**QuickCharge Model 64V/25A  
115V or 230 V Battery Charger  
LCD Display Amps & Volts  
Set Internal Switch for AGM,  
Deep Cell, Gels & Starting Batteries  
**\*Built in SAFETY** - Cables not Live  
until connected to battery!!!!**



**Quick Charge Battery Chargers:**  
QP6425      64V/25A 117V 60HZ  
QP3225      32V/25A 117V 60HZ

### Other Related Parts

- 8197509 Terminal Lug Battery
- 8211044 Terminal Lug Battery
- 40015058 Bolt Kit
- JUMPERRR31 Cable Jumper Kit



## BRAKE HANDLES

### Complete Line of Brake & Reverser Handles. Manufactured in Steel, Bronze and New Safety Plastic Versions



**Safety Handles  
Color Coded and Glows in the dark!!**

P/N	Description
8251349SAFETY	Independent Brake
8204980SAFETY	Reverser Handle Safety
8269348	Independent Brake - Offset
8495188	Independent Brake - Offset
9550359BLK	26C Automatic Plastic Safety Version
9550359	26C Automatic Steel Construction
G84B512767P1	Reverser Handle
G41B557247G1	Reverser Handle

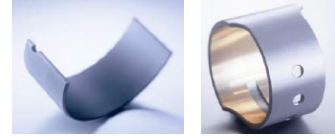


# BRYTE CHOICE | AFRICA

INTERNATIONAL IMPORTERS AND EXPORTERS OF ENGINEERING MERCHANDISE  
SINCE 1986

## BEARINGS

### Complete Line of Engine Bearings



<u>P/N</u>	<u>Description</u>	<u>P/N</u>	<u>Description</u>	<u>P/N</u>	<u>Description</u>
8028006	Thrust Bearing Collar	8452186 16	Cyl. Upper Main Kit	114X1150	Lower Grooveless
8028419	Thrust Bearing Collar	8452210 16	Cyl. Lower Main Kit	114X1103-1	Upper Grooved Main
8029461	Bushing	8455081 12	Cyl. Upper Main Kit	114X1111-4	Thrust Washer
8029491	Oil Pump Bushing	8455083 12	Cyl. Lower Main Kit	114X1127-3	Thrust Washer
8068624	Floating Bushing	8455665	Rear Lower Main	116X1184EFI	Large Cam
8071176	Cam Bearing	8455666	Front & Int. Lower Main	117X1028-2	Articulated Rod
8136114	Con Rod Bearing Lower	8455667	Center Lower Main	117X1045-2	Upper & Lower Con Rod
8237900	Bearing Front Bracket	8455668	Center Lower Main	117X1050-1	Grooveless Con Rod
8253825	Bearing Rear Bracket	8455844	Rear Upper Main	117X1070	Upper Grooveless Con
8341192	Insert Roots Blown	8455850	Center Upper Main	117X1075	Rod Lower Grooveless
8354118	Con Rod Bearing Upper	8455856	Center Upper Main	142X1019	Con Rod Standard Piston
8361565	Insert Carrier	8455862	Front & Int. Upper Main	142X1042	Pin Bushing Piston Pin Bush .30 oversize
		9571921	Rocker Arm Bushing		

## BRAKE PRODUCTS

### Complete Line of Brake Head, Keys, Pins & Bushings for Locomotive Trucks.

<u>P/N</u>	<u>Description</u>	<u>Comment</u>
8151703	Brake Head	OE Style
8160059	Brake Head	GP OE
8160060	Brake Head	OE Style
8235906	Brake Head	OE Style
8242785	Brake Head	SW Trucks
8385297	Brake Head	OE or Canted Style
8388332	Brake Head	OE or Canted Style
41A210602P2	Brake Shoe Key	13"
8101930	Brake Shoe Key	14"
9501303	Brake Shoe Key	15"
8100136	Brake Shoe Key	16"
8101977	Brake Shoe Key	20"












# BRYTE CHOICE | AFRICA

INTERNATIONAL IMPORTERS AND EXPORTERS OF ENGINEERING MERCHANDISE  
SINCE 1986

## BRAKE SHOES

Complete line of 26L Air Brake New and Unit Exchange

Locomotive Brake Shoes	Shoe Length	Shoe Face Width	Face Design	Side Relief	Tie Plate	Taper	Rejection Lugs	RFP Alternative
<b>H33</b> 	14"	3"	Center Relief	Yes	Yes	No	High Friction Only	V330 V392
<b>H43</b> 	14"	3"	Full Face	Yes	No	45 End 5 Face	High Friction Only	N/A
<b>H63</b> 	18"	3"	Center Relief	Yes	No	No	High Friction Only	V188 V381
<b>L35</b> 	14"	3"	Center Relief	Yes	No	No	Low Friction Only	V553 V381
<b>L63</b> 	18"	3"	Center Relief	Yes	Yes	No	Low Friction Only	V555 V556 V575

We offer a complete line of both High and Low Friction



## BRAKES - HANDWHEEL & RATCHET

Complete Line of Wheel and Ratchet Style Handbrakes

P/N	Model	Dia	O.A.	B.H. LF	End Link	P/N	Model	Dia	O.A.	B.H. LF	End Link
6948643	850-7	22"	6'-5"	5'-11"	18	9093520	850-7	22"	11'-6"	11'-0"	1091-A
6946788	850-7	22"	14'-4"	13'-10"	1091-A	9097828	850-7	18"	11'-6"	11'-0"	1091-A
6938301	850-7	16"	14'-0"	13'-6"	1091-A	9501206	850-7	20"	11'-1"	10'-7"	1091-A
6948643	850-B	18"	6'-5"	5'-11"	1091-A	9322184	850-7	20"	13'-0"	12'-6"	1091-A
6949785	850-C	22"	14'-10"	14'-4"	1091-A	9507177	850-7	20"	10'-11"	10'-5"	1091-A
6942139	850-7	22"	15'-8"	15'-2"	1091-A	40019843	850-B	22"	6'-5"	5'-11"	1091-A
6939749	850-7	20"	15'-8"	15'-2"	1091-A	10576362	850-B	22"	35'-4"	34'-10"	1091-A
6955210	850-C	22"	6'-5"	5'-11"	1091-A	6969970	850-B	22"	33'-4"	32'-10"	1091-A
6949199	850-B	18"	6'-5"	5'-11"	1091-A	40037149	850-1	22"	6'-6"	7'-0"	18
6953126	850-C	18"	15'-4"	14'-10"	1091-A						

O.A. – Overall Chain Length  
B.H. LF – Chain Length Below Hand Lever Fulcrum



# BRYTE CHOICE | AFRICA

INTERNATIONAL IMPORTERS AND EXPORTERS OF ENGINEERING MERCHANDISE  
SINCE 1986

## BRUSHES - CARBON

Complete Line of Premium Carbon Brushes. Traction Motor - Alternators Main and A Generators Blowers, Heaters and Fans

P/N	Application	P/N	Application
40034666	AR10	8307806	D12-D25 Main Gen.
6727520	Aux. Gen.	8413190	D14/D16 Main Gen.
9096661	Aux. Gen.	8330994 - Old	D32
9096992	Aux. Gen.	8417868 - New	Main Gen.
8271326	Aux. Gen. Grid Blower	9322054 2 wafer	D27-D57 TM
4996232	Aux. Gen.	9322058 3 wafer	D77-D78 TM
G998X67 G998X90	Fuel Pump	40070976 5/8 x 2	With Insulation
G149X1011-1 G149X1051	Fuel Pump	40047198	D87 24/TM
G2X4460	Heater	3/4 x 1 1/2	D87 16/TM
G6727520P1	Aux. Gen.	9569980	Cab Heaters
G41A239329P2	GTA11 Alternator for Steel Ring	1906989	Starter
G221F223P1 G221F234P1	Fuel Pump	G41B537963P1	752E8 TM
8078488	Fuel Pump	G41B535803P3	752AF & AG TM
G41A330412P2	Alternator	G149X1051-1	Cab Heater Motor



## BRUSHHOLDERS

Complete Line Of New And Unit Exchange Brushholders

P/N	Holder Application	Brush Size
8084210	D12 D22 Main Generator	5/8 x 1 5/16
8124419	D15 D25 Main Generator	5/8 x 1 5/16
8331071	D14 D32 Main Generator	.842 x 1 5/16
8338116	Spring Cell Brush Holder	-
8413188	D14 Alternator	3/8 x 3/4
8413189	AR10/TA17 Slip Ring	1/2 x 1 1/4
5551980	A7159 Ailiary	1 X 5/8
5387140	A7159 Ailiary	5/8 x 1 3/4
8174433	D29 Traction	5/8 x 1 3/4
8290124	D31 Traction	5/8 x 1 3/4
8417729	D57/D77/D78/D87 Traction Motor 16/Mtr	5/8 x 2
9550251	D87B Traction 24/Mtr	.713 x 1 1/2

P/N	Holder Application	Brush Size
G41B530658G1	GY19/GY27/GY50	1/2 X 1
G41B530658G1	GY19/GY27/GY50 Main Generators	1/2 X 1
G6733792G1	GT566/568/581/586/603 Main Generators	3/4 1 1/4
G334B746 / G6732876	GT558 Main Generator	5/8 X 1 1/4
G41B531649 / G41C633095	GTA22/24/25/26 Main Generator	3/4 X 1 3/4
G41B537170G1	GMG185A Alternator	3/4 X 1 3/4
G41C632667G1 / G41C632667G6	GE752 Radial Traction Motor	3/4 X 2 1/4
G41C633771G1 / G41C633771G3	GE752 Reaction Traction Motor	3/4 X 2 1/4





## BUMPERS CAB - SAFETY HEAD

Complete Line of Cab Safety Bumper Protection

<u>P/N</u>	<u>Length</u>
10568293	1/4"
10596355	23"
10615556 Left side	8"
10615560	8"
10643171	17"
10643172	8 1/4"
10643173	15 1/4"
10643249	18"
10666194	17"
40047167	8"
40050919	14 1/4"
40072060	16.56"
40072097	11"
40100014	22.154"
40100015	18"
40126589	14"
40141486	4"
9312193 Smoke Retardant	
9312229	
9321670	20 3/4"

\*Partial Listing of Common Bumpers

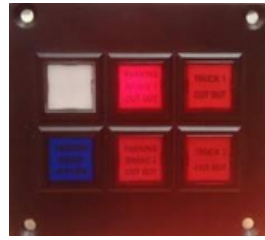


## BULBS

Complete Line of Premium Grade Light Bulbs: Filament, Halogen, and LED

### PRD16184541 6-Button Switch

Designed to meet the vibration and electrical requirements of locomotives that utilize electronic/ computer enhanced switches.



- Solid state 1 Million click reliability
- Exact Terminals
- Exact Drop In
- Sealed Unit
- Custom Silk Screen Button Labels

### 8287294LED Lamp Holder Flat or Domed



- Long Life LED Light - Lasting Up To 100,000 Hours
- Multiple Colors Available To Choose From Including: Amber, Blue, Green, Red, and White
- Designed For Durability with Polycarbonate Lens

### Cab Ceiling Lights Single or Dual Lamp



P/N:  
9096838 - Single Lamp  
9502221PRD - Dual Lamp

Enhanced Design with One or Both Bulbs On/Off Option

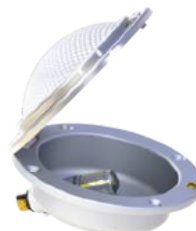
### Polycarbonate Globe Light Fixture



- Polycarbonate Material
- WILL NOT SHATTER (like glass does)
- High Heat Applications

8004613PRD

### Safety Lights



G41A205337ABP2 LED Walkway Lights



PRD16187089 Step Light



## BULBS

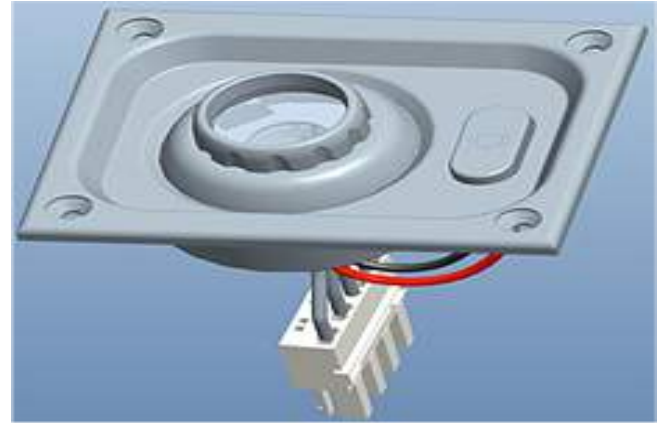
### Complete Line of Premium Grade Light Bulbs: Filament, Halogen, and LED

P/N	Description	Style
44 44LED	2 Watt 6 Volt 2 Watt 6 Volt	Filament LED Dimmable
1828 1828LED	1.8 Watts 37 Volt 1.8 Watts 37 Volt	Filament LED
1866 1866LED	.25 Watt 6.3 Volt .25 Watt 6.3 Volt	Filament LED
50A19 50A19Premium	75 Volt 50 Watt Rough Service 75 Volt 50 Watt	Filament Filament
RS50A19LED-6WLL	75 Volt 6 Watt Rough Service Complies to AAR Standard S- 515 IP67 Waterproof	LED Totally Sealed
RS50A19LED-6W-SL1	75 Volt/6W Rough Service IP65 - Universal Application	LED
RS50A19LED-3WCORN	75 Volt 6 Watt Rough Service Complies to AAR Standard S-5515 IP67 Waterproof	LED Totally Sealed
30S11	30 Watt 75V	Filament
SLS30S11LED-9	30 Watt 75V	LED
200PAR56	32 Volt 200 Watt Headlight	Filament 200 Watt
200PAR56FRA	32 Volt 250 Watt Headlight FRA Approved	Halogen 250 Watt
350PAR56	75 Volt 300 Watt Ditch Light	Filament 350 Watt
350PAR56FRA	75 Volt 400 Watt Ditch Light FRA Approved	Halogen 400 Watt
LED350PAR56	75 Volt Headlight/ Ditch Light IP67 Waterproof	LED

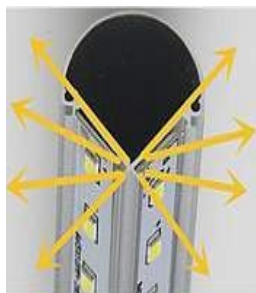
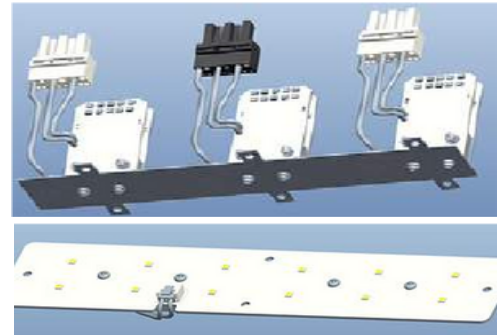
### LEDs for Freight and Passenger Locomotives and Cars

LED Circuit Board Technology for Reading Lights, Specialty Lights, and Upgrading from Incandescent to LED

#### T8 LED Tubes



- Provide optimum light distribution for interior spaces
- V-shaped mount and rotatable end-cap provides homogeneous light distribution
- Provide 50,000-hour life cycle to reduce maintenance costs
- 22W energy consumption per 4-foot length
- Available in three color temps - warm, neutral or cool white

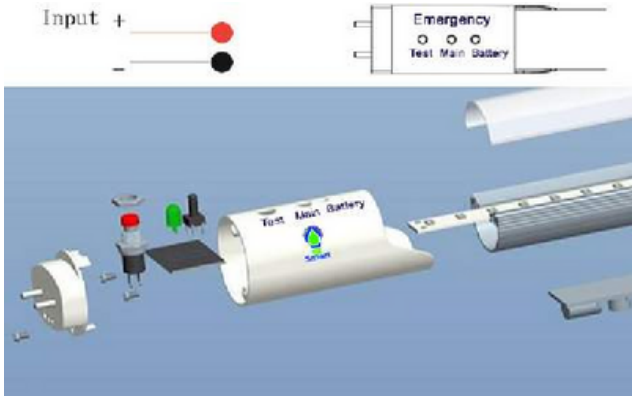


Part #	Operating Voltage	Power	Length	lpw	
				Clear	Frost
SLS-T8V-G60-24V-10W-_-_-_-	24V DC	10W	588mm	120 lpw	110 lpw
SLS-T8V-G120-24V-22W-_-_-_-	24V DC	22W	1,198mm	120 lpw	110 lpw
SLS-T8V-G150-24V-28W-_-_-_-	24V DC	28W	1,498mm	120 lpw	110 lpw
SLS-T8V-G60-240V-10W-_-_-_-	240V DC	10W	588mm	120 lpw	110 lpw
SLS-T8V-G120-240V-22W-_-_-_-	240V DC	22W	1,198mm	120 lpw	110 lpw
SLS-T8V-G150-240V-28W-_-_-_-	240V DC	28W	1,498mm	120 lpw	110 lpw





### Emergency Backup Power T8 LED Tube



- Integrated battery backup power for multiple emergency applications
- Can be used for Facilities, Passenger Transit LRV, Locomotives and Cars
- Designed to replace all external backup power ballasts and drivers to keep lighting ON in the event that the main voltage is off.
- Incorporates test buttons to ensure battery is operational for Maintenance Personnel or Fire Marshal certification.
- Can be suited to operate on various voltages

### CABINETS - HIGH VOLTAGE

We offer a Full Line of New and Remanufactured High Voltage Cabinets



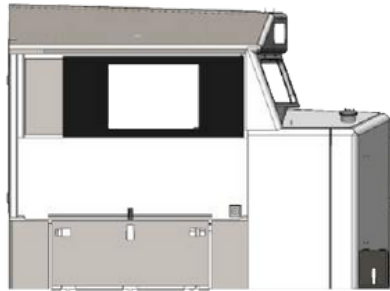
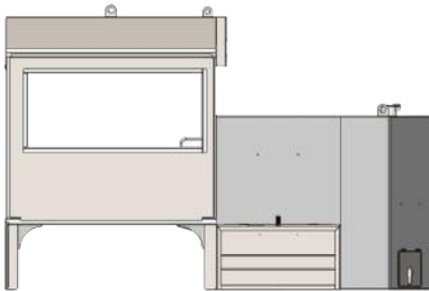


# BRYTE CHOICE | AFRICA

INTERNATIONAL IMPORTERS AND EXPORTERS OF ENGINEERING MERCHANDISE  
SINCE 1986

## CABS

Complete Line of Regular & New Crashworthiness Cabs, Frames and Fuel Tanks



**Cab Door Assemblies**



**New Frames**



**Fuel Tanks - Standard & New  
Crashworthiness**



**Cab Stuffed with All Components**



**8167296  
Flame Arrestor Fuel Tank**



**9334250  
Awning Window**

### Full Line of Fuel Gauges



#### P/N

- 9515153 Fuel Gauge Float Type 3900 Gallons
- 9321144 Fuel Gauge Float Type 4000 Gallons
- 8438327 Fuel Gauge Side Mounted 4000 Gallons
- 40058437 Fuel Gauge Float Type 5000 Gallons SD70



**Modified Switch for  
1 or 2 Lights**



### Cab Ceiling Lights Single or Dual Lamp

#### P/N

- 9096838 - Single Lamp
  - 9502221PRD - Dual Lamp
- Enhanced Design with One or Both Bulbs On/Off Option**



# BRYTE CHOICE | AFRICA

INTERNATIONAL IMPORTERS AND EXPORTERS OF ENGINEERING MERCHANDISE  
SINCE 1986

## CABLE 27 PIN MU - RECEPTACLES & HANGERS

Complete Line of Premium MU Cables & Hangers



P/N	Overall Length	Type
8195546	5 Ft.	MU Cable
8208511	7 1/2 Ft.	MU Cable
8195547	8 Ft.	MU Cable
8195548	9 Ft.	MU Cable
8196711	11 Ft.	MU Cable
8200922	Hanger 2 Piece Split w/Hook	
9573822PRD	Hanger w/Hook Enhanced Long Life	
HR-50 PP16540	Hanger Solid/Fixed MU Wire Holder - Class 1 Style	

\*Note: Hangers add prefix C with Hook & Chain



PP16540



820092



9573822PRD

**\*Long Life Heavy Duty Rubber\***

## CARD HOLDERS

Complete Line of Card Holders

P/N	Description	Comment
 C90260	4 Slot	Holds Qty 4 6" x 9" Cards
 C90227	Single Slot	11 1/2 x 13 1/2" Single Card 6 Holt Mount
 C90262	Single Slot	3 1/2"x 4" 4 Hole Mount
 C10909	Vertical	Single Slot 9" x 11" 3 Hole Mount
 G84B100710P1	Horizontal	Single Slot 9" x 11" 3 Hole Mount
 PP17672	8 Slot	8 Slot 4 hole 12 1/2" x 19 3/4"
 PP12208	Single Slot	8" x 11 1/2"
 G84B109851	Single Slot	9" x 11"
 G84B102294	3 Slot	10 1/2" x 12 1/2" 4 hole

\*Many others available on request.



**CHEMICAL LINE**

A complete line of bio-degradable chemicals for the rail industry.

**299 - Water Leak**



Concentrated vivid tracing dye for use in detecting water leaks in water cooled engines. Provides a vivid visual marker to trace and see the location of water leaks in normal lighting. Visibility is enhanced using a black light.

<u>P/N</u>	<u>Size</u>	<u>Comment</u>
299TRACER-1	16 Oz	Liquid - 12 Per Case

**288 Fuel Leak**



Concentrated vivid tracing dye for use in detecting fuel leaks in diesel engines. Provides a vivid visual marker to trace and see the location of water leaks in normal lighting. Visibility is enhanced using a black light.

<u>P/N</u>	<u>Size</u>	<u>Comment</u>
288-16-4	16 Oz	Liquid - 4 Per Case
288-2-15	2 Oz	Liquid - 15 Per Case
288-2-96	2 Oz	Liquid - 96 Per Case

**810 - Heat Exchanger Inhibitor**



Multi-metal safe corrosion inhibitor packaged in convenient, safety-oriented Sticks for use in locomotive diesel engine cooling systems to protect against premature failure due to corrosion.

<u>P/N</u>	<u>Size</u>	<u>Comment</u>
810WATER-BX	15Lb	Stick 15Lb per Box

**850 - Heat Exchanger Inhibitor**

Multi-metal corrosion inhibitor packaged in convenient, safety-oriented liquid format, for use in locomotive diesel engine cooling systems to protect against premature failure due to corrosion. **NO MEASURING - Just Pour Directly Into Radiator**

<u>P/N</u>	<u>Size</u>	<u>Comment</u>
850COR-5	5 Gallon	Liquid
850COR-55	55 Gallon	Liquid
805COR-275	275 Gallon	Liquid

**Radiance - Heat Exchanger Inhibitor With Tracer**

A concentrated, multi-metal corrosion inhibitor for use in locomotive cooling water systems to protect metals from premature failure due to corrosion and prevent scaling. Contains a concentrated vivid tracer dye for use in detecting water leaks in water-cooled locomotive engines. Inhibits corrosion of all metals including cast iron, steel, copper, brass, and solder.

<u>P/N</u>	<u>Size</u>	<u>Comment</u>
Radiance-5	5 Gallon	Liquid
RADIANCE-55	55 Gallon	Liquid



5 Gallon



55 Gallon





# BRYTE CHOICE | AFRICA

INTERNATIONAL IMPORTERS AND EXPORTERS OF ENGINEERING MERCHANDISE  
SINCE 1986

## CHEMICAL LINE

A complete line of bio-degradable chemicals for the rail industry

### Rust Inhibitors

P/N	Size	Comment
PRD571RUST-5	5 Gallon 55	Liquid
PRD571RUST-55	Gallon 5	Liquid
PRD573RUST-5	Gallon 55	Liquid
PRD573RUST-55	Gallon 5	Liquid
PRD577RUST-5	Gallon 55	Liquid
PRD577RUST-55	Gallon	Liquid



#### 571

- Highly concentrated liquid inorganic rust inhibitor engineered for all iron, steel, yellow and soft metal parts when additional corrosion, oxidation or rust protection is needed.
- Specifically designed to provide in-process rust protection of parts and for short-term part storage.
- Provides superior rust protection in wash and final rinse sections of all aqueous industrial parts washers, from heated high-pressure spray cabinet and conveyORIZED systems, to free standing manual and immersion-type tanks.
- Compatible with most alkaline cleaning compounds when simultaneously used.
- Harmless to engines and equipment.

#### 577

- A highly concentrated liquid inorganic rust inhibitor engineered for indoor storage for all iron and steel metal parts when additional corrosion, oxidation or rust protection is needed.
- Specifically designed to provide in-process rust protection of parts and for short-term part storage.
- Provides superior rust protection in wash and final rinse sections of all aqueous industrial parts washers, from heated high-pressure spray cabinet and conveyORIZED systems, to free standing manual and immersion-type tanks.
- Compatible with most alkaline compounds when simultaneously used.
- Harmless to engines and equipment.

#### 573

- A pigmented solvent-based rust proofing compound designed for long-term outdoor storage of metal parts.
- Easily applied and removed and provides a transparent film with up to a year of outdoor rust protection.
- Dries quickly to a semi-transparent blue coating/film, allowing for easy reading of identification marks.
- Easily applied by brush, dip, or spray.

### Locomotive Exterior Wash

P/N	Size	Comment
BREAK-32	32 Oz	Spray Bottle
BREAK-5	5 Gallon	Liquid
TOTAL-1	1 Gallon	Liquid
TOTAL-5	5 Gallon	Liquid
TOTAL-55	55 Gallon	Liquid
TOTALB-1	1 Gallon	Liquid
TOTALB-5	5 Gallon	Liquid
TOTALB-55	55 Gallon	Liquid



#### Break

- Ready-to-use, multipurpose, heavy-duty liquid detergent for cleaning all hard surfaces.
- Specifically formulated to clean oily residues and sooty grime found in factories, bathrooms, vehicles and offices.
- Virtually safe on all hard surfaces including: machinery, painted surfaces, wallpaper, counters, desks, and industrial fixtures.
- Contains no phosphates, is non-flammable, biodegradable and environmentally friendly.



#### Total

- A heavy duty, aluminum safe, high pH, multipurpose degreaser and detergent capable of cleaning and degreasing everything from hard-surface concrete shop floors & walls, to industrial equipment, to company vehicles.
- Safe to use anywhere water is tolerable!



#### Total B

- A super duty, aluminum safe, high pH, alkaline degreaser and detergent engineered to attack the toughest grease, grime, soil or any other unwanted contaminants associated with facility maintenance cleaning.
- Seacole C&H's most powerful multipurpose degreaser and cleaner that is aluminum safe and biodegradable.
- Safe to use anywhere water is tolerable!



## CHEMICAL LINE

A complete line of bio-degradable chemicals for the rail industry

### Parts Washer - Aluminum Safe

P/N	Size	Comment
DET14EX-50	50 Lb	Pail
DET14EX-450	450 Lb	Pail
14EXCAL-50	50 Lb	Pail
14EXCAL-450	450 Lb	Pail
SPRAYDETEL-5	5 Gallon	Liquid
SPRAYDETEL-55	55 Gallon	Liquid



Spraydet 14EX Drum

### Spraydet 14EX

Aluminum safe, inhibited alkaline powdered detergent containing NO useless fillers or additives engineered to produce superior cleaning results for the removal of the toughest contaminates on all metal & plastic surfaces.

### Biodegradable

Performs in all aqueous industrial parts washers including heated high-pressure spray cabinets, conveyor style spray wash systems, freestanding manual and immersion type tanks, and more!

### 14EX Calibur

Aluminum safe, inhibited alkaline powdered detergent containing a proprietary blend of surfactants specifically engineered to produce superior carbon removal and cleaning results on all metal & plastic surfaces.

### Biodegradable

Performs in all aqueous industrial parts washers including heated high-pressure spray cabinets, conveyor style spray wash systems, freestanding manual and immersion type tanks, and more!

### Spraydet EL

A highly concentrated, aluminum safe, liquid detergent engineered to produce superior cleaning results for the removal of the toughest contaminates on all metal and plastic surfaces.

### Biodegradable

Performs in all aqueous industrial parts washers including: heated high-pressure spray cabinets, conveyor style spray wash systems, free Standing manual and immersion type tanks, and more!



5 Gallon



55 Gallon



Before

After

### Parts Washer - Steel Safe

P/N	Size	Comment
ACTION-1	1 Gallon	Liquid
ACTION-5	5 Gallon	Liquid
ACTION-55	55 Gallon	Liquid
AQUASOLVE-1	1 Gallon	Liquid
AQUASOLVE-5	5 Gallon	Liquid
AQUASOLVE-55	55 Gallon	Liquid
SPRAYDETRS-50	50 Gallon	Pail
SPRAYDETRS-50	50 Gallon	Pail



### Action Cleaner

- Premium quality, heavy-duty, biodegradable liquid detergent with butyl for industrial use in cleaning all hard surfaces.
- Extremely powerful in cutting grease and oil eliminating the need to scrub or brush and highly effective in both hot and cold water.

### Aqua Solv II

- Aluminum safe, pH neutral, liquid detergent engineered to be specifically used in manual type fountain style aqueous parts washers or "Sink on a Drum" type units to produce superior cleaning results for the removal of the toughest contaminates.
- Environmentally green by eliminating the need for harsh cleaning solvents. Biodegradable & environmentally safe.
- Contains specialty surfactants for excellent carbon, grease, and grime removal. Non-VOC by CARB definition per ASTM D1298.

### Spraydet RS

- A highly alkaline powdered detergent engineered to produce superior cleaning results for the removal of the toughest contaminates on all FERROUS metal surfaces.
- A powerful rust stripper that provides a one-step cleaning process that eliminates acid pickling, neutralizing, and rinsing steps.



## CHEMICAL LINE

A complete line of bio-degradable chemicals for the rail industry

### Defoamer O

A highly concentrated, non-silicone, liquid foam suppressant that is compatible when used with all SPRAYDET detergents when additional foam control is necessary.

Specifically designed to quickly eliminate foaming caused by certain equipment types & designs, water quality, types of soils being cleaned and heavy soil loading. Provides superior foam control in wash and rinse sections of all aqueous industrial parts washers from heated high-pressure spray cabinet & conveyORIZED systems to free standing manual and immersion type tanks.



P/N	Size	Comment
DEFOAMER-5	5 Gallon	Liquid

### Dirt Buster Kit

A heavy duty, aluminum safe, high pH, alkaline multipurpose degreaser and detergent capable of cleaning and degreasing everything from hard-surface concrete shop floors & walls, to industrial equipment, to company vehicles. Packaged as an EZ Kit for greater economy. Contents include 2 - 2.5-gallon jugs that when mixed together produce 30 gallons of super concentrate.



P/N	Size	Comment
DIRTBUSTER-25	2.5 Gallon	Package

### Dirt Buster Kit

A fast, efficient, calcium chloride based ice melt packaged in a safety-oriented lightweight EZ spread 10 pound bag capable of being dispensed using one arm only. Highly effective at or above temperatures of -25°F! Economic formulation requires less volume when compared to conventional salt-based ice melts and leaves no white stains or residue. Railroad Approved for Weight Safety Practice!!!!



P/N	Size	Comment
CAL-10	10 Lb	Bag
CAL-10SKID	10 Lb	Qty 160 Bags per Skid



### BioGuard Plus 6™

**Biocide and Multifunctional Diesel Fuel Additive**

#### Description, Features & Benefits

The only EPA registered fuel microbiocide containing a multifunctional premium diesel additive. Contains BioGuard™ microbiocide to prevent microbial contamination and fuel filter plugging. Formulated with Diesel Guard™ to help prevent ultra low sulfur diesel and biodiesel related problems and significantly improve heavy-duty diesel engine performance. Helps reduce fuel consumption, smoke, soot, odor and harmful exhaust emissions. Contains less than 15ppm of sulfur to comply with ultra low sulfur diesel regulations. Product performance has been documented in ASTM, SAE and engine manufacturer tests.

#### Continuous Use Helps To...

- Prevent bacteria and other microbiological growth
- Stabilize fuel to keep it fresh for up to 2 years or more
- Improve thermal stability beyond industry standards
- Control moisture to prevent sludge
- Lubricate fuel injectors & pumps to prevent premature wear
- Prevent fuel filter plugging and extend fuel filter life
- Prevent rust & corrosion
- Increase cetane number
- Dosage 1 Gallon per 1500 Gallons Diesel
- Clean up and prevent fuel injector deposits
- Exceed Cummins L-10 "Superior" injector deposit cleanliness rating
- Reduce piston and combustion chamber deposits
- Increase power and performance\*
- Reduce smoke, odor, transom soot \*
- Reduce harmful exhaust emissions\*
- Contains no alcohol
- Eliminate the need for other fuel additives
- Reduce fuel consumption up to 7.6%\*

P/N	
BGDP632	Qty 12 32 Oz Bottles per case
BGDP601	Qty 4 1 Gallon per case
BGDP625	Qty 2 2.5 Gallon per case
BGDP6-55	55 Gallon Drum





## SEASONAL PRODUCTS

### 688S - Portable Toilet Summer

A concentrated liquid odor control agent for use in chemical toilets in airplane, locomotive, RV, bus and portable toilet applications.

A liquid formulation that mixes readily with water, glycol or salt solutions.

No messy powder to handle or clean up.

Contains no hazardous or toxic ingredients.

**NO FORMALDEHYDE.**

### 688S - Portable Toilet Winter

A concentrated liquid odor control agent for use in chemical toilets in airplane, Locomotive, RV, bus and portable toilet applications.

A liquid formulation that mixes readily with water, glycol or salt solutions.

No messy powder to handle or clean up.

Contains no hazardous or toxic ingredients.

**NO FORMALDEHYDE.**

Provides protection from freezing down to -40°F



55 Gallon

<u>P/N</u>	<u>Size</u>	<u>Comment</u>
688S-55	55 Gallon	Liquid - SUMMER
688S-55	55 Gallon	Liquid - WINTER

## CIRCUIT BREAKERS

Complete Line of Heavy Duty Circuit Breakers. Below is a Listing of Common Items

<u>P/N</u>	<u>Amp</u>	<u>Comment</u>	<u>P/N</u>	<u>Amp</u>	<u>Comment</u>
8458705	2	Single Pole	8448859	50	Double Pole
8456915	5	Single Pole	8316879	50	Double Pole
8458697	10	Single Pole	8433382	60	Double Pole
8458698	15	Single Pole	8485669	60	Double Pole
8458699	30	Single Pole	6945270	70	Double Pole
8458735	3	Double Pole	8433383	100	Double Pole
8458728	5	Double Pole	8433381	150	Double Pole
8458736	5	Double Pole	8458741	15	Triple Pole
8458739	15	Double Pole	8458742	30	Triple Pole
8458727	15	Double Pole	41A218545P4	15	Single Pole
9090434	15	Double Pole	41B544907P1	15	Single Pole
8458724	30	Double Pole	41B544907P2	25	Double Pole
8458726	35	Double Pole	41A212414P14	15	Double Pole
8458738	40	Double Pole	41A212414P2	30	Double Pole
8414231	50	Double Pole			

\*We also carry a complete Line of Electrical Buss Bars and Shunts



8280185 Main Battery Switch  
-400 Amp/250 Volt



# BRYTE CHOICE | AFRICA

INTERNATIONAL IMPORTERS AND EXPORTERS OF ENGINEERING MERCHANDISE  
SINCE 1986

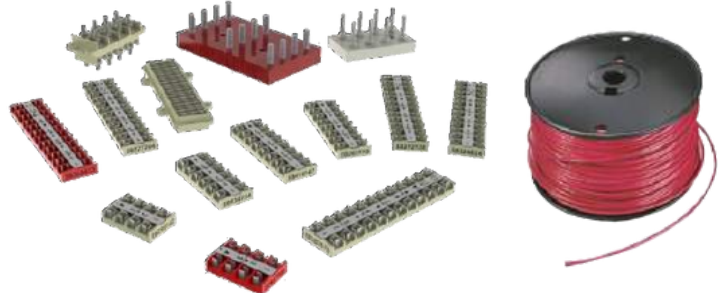
## CLAMPS

Complete Line of Clamps for Multiple Applications



## CONTACTS, ELECTRICAL WIRE & TERMINALS

Complete Line of Electrical Contacts, Wire and Terminals



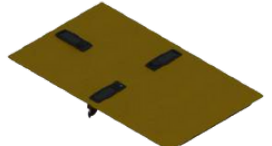
## TOP DECK KITS

Kits include all Heads, Liners, Rods, Pistons, Rings, Bearings, Valves, Gaskets & Hardware to do a Complete rebuild in the field. Kits available for WXO, WBO & WBG style compressors Unit Exchange or Outright



## CONTROL STANDS

Full Line of New Control Stands with 100% New Components



New Anti-Rattle Doors with Adjustable Locks



New Stand Ready for Install

<u>P/N</u>	<u>Description</u>
9093629	Dynamic Plastic Face
8226959	Dynamic Steel Face
9325903	Dynamic Plastic Face
9091052	NON-Dynamic Plastic Face
8227211	NON-Dynamic Steel Face



100% New & Remanufactured Controllers. Dynamic and Non Dynamic



\*Ask Us About Our New LED Dimmable Bulbs for Control Stands



Custom Panels Related to PTC Installations





# BRYTE CHOICE | AFRICA

INTERNATIONAL IMPORTERS AND EXPORTERS OF ENGINEERING MERCHANDISE  
SINCE 1986

## COMPRESSORS - AIR & WATER

Complete Line of New & Remanufactured "True-Blue™" series WBO, WBG and WXO Air Compressors, Parts and Components



Compressor Test Cell



Quality Build Procedures



Remanufactured Components

**New and Remanufactured**

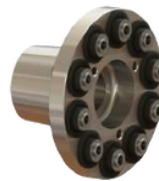
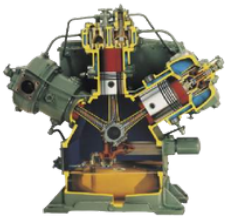
**Description**

**Type**

WXO	Air Cooled - 3 Cylinder	Low & High Base Single & Double Shaft
WBO	Water Cooled - 3 Cylinder	Low & High Base Single & Double Shaft
WLNA9 Series	Water Cooled - 4 Cylinder	Low & High Base Single & Double Shaft
WLAA9	Water Cooled - 4 Cylinder	Low & High Base Single & Double Shaft
WBG	Water Cooled - 6 Cylinder	Low & High Base Single & Double Shaft

**Common Parts Listing By Air Compressor Model**

WXO LP Head	8042133
WXO LP Cyl.	8059939
WXO LP Piston	40017901
WXO LP Rod	8033545
WXO HP Head	8033550
WXO HP Cyl	8083614
WXO HP Piston	8343422
WXO HP Rod	8033545
WBO LP Head	8237532 Both Styles
WBO LP Cyl.	8237539 Old Style
WBO LP Cyl.	9518774 New Style
WBO LP Piston	8338021 Old Style
WBO LP Piston	40017901 New Style
WBO LP Rod	8033545
WBO 1/2 Bearing	8496981
WBO HP Head	8238541 Old Style
WBO HP Head	8347435 New Style
WBO HP Cyl.	8237531 Old Style
WBO HP Head	8347435 New Style
WBO HP Piston	8343422 Old Style
WBO HP Piston	40017901 New Style
WBO HP Rod	8033545



8236433  
Coupling Air Compressor



8234958  
Bushing



8323180  
Coupling Engine

**Valves New and Old Style**

**Description**

9319946	HP Valve Inlet
8424969	HP Valve Outlet LP
9319947	Valve Inlet
8424968	LP Valve Outlet



Old Style 8 bolts from underneath  
New Style 4 bolts from underneath 4 from top



# BRYTE CHOICE | AFRICA

INTERNATIONAL IMPORTERS AND EXPORTERS OF ENGINEERING MERCHANDISE  
SINCE 1986

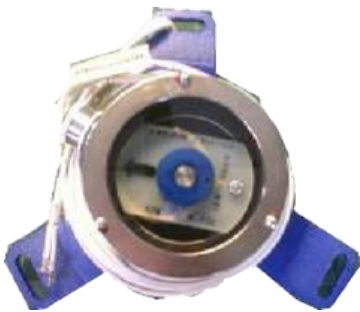
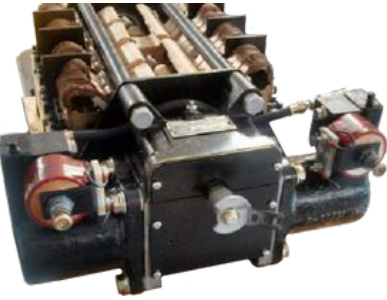
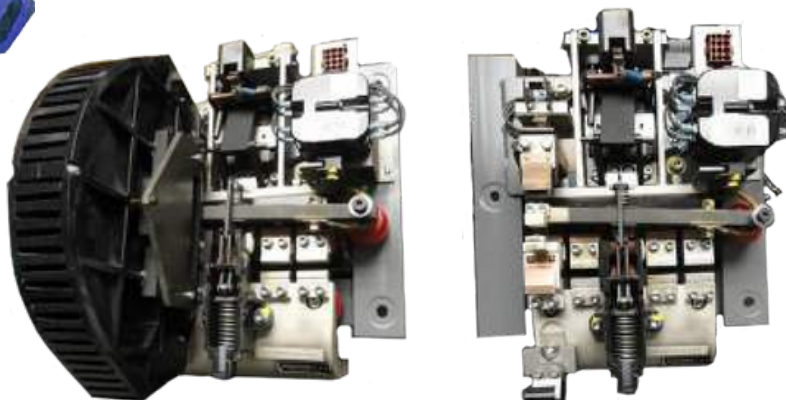
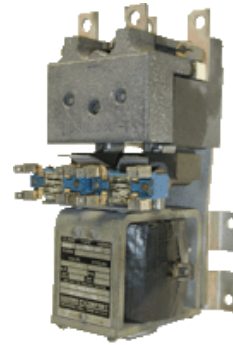
## CONTACTORS, CONTROLLERS, RELAYS & MODULES

Complete Line of Control Stands, Controllers, Contactors, Relay, Voltage Regulators and Modules.

Our Line includes New, and "True-Blue™" Unit Exchange

Below is a BRIEF Listing of our Quality New & Rebuilt Products

<u>P/N</u>	<u>Description</u>
8400143	Contacteur Control
8251126	Cabinet Contacteur Gen. Shunt Field
8192805	Contacteur Power
8458534	Contacteur Power
8461331	Contacteur Magnetic
8453175	Motor Module Control
8463776	Motor Module Control
9091052	Controller Non Dynamic
9093629	Controller Dynamic & Brak
9325903	Controller Dynamic & Brake
8330790	Voltage Regulator 3 Terminal
8351980	Voltage Regulator 4 Terminal
8484375	6 Panel Light Enhancement
9322456	Rheostat 1500 Ohms
40040084	SGC 5000A Power Contacteur
8131665	Reverser 4 motor 4 Contact
8131666	Reverser 2 Motor 2 Contact
17FL & 17FM	Aux and Other Modular Panels





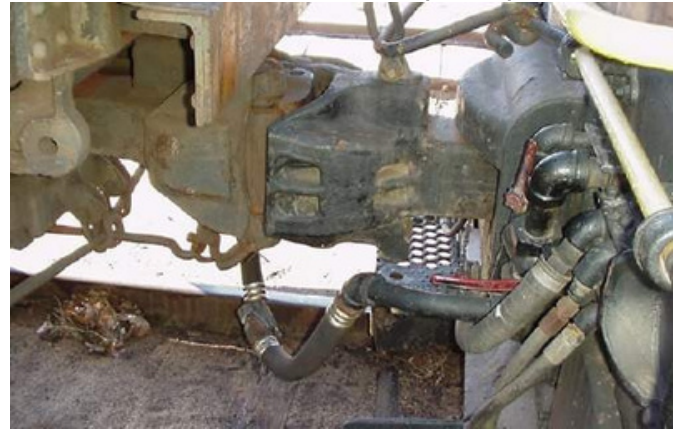
## COUPLERS - YOKES & DRAFT GEARS

Complete Line of Heavy Duty AAR Certified Couplers, Yokes and complete Assemblies New & Unit Exchange

<u>P/N</u>	<u>Description</u>
8034983	Coupler Type E Non Alignment
8219072	Coupler Type E Non Align Control 4888
8349831	Coupler Type F Align Control 8301
8385515	Coupler Type E Align Control 8311/8306
PRD16184269	Mark 50 For 100 Ton Train Cars
G499A423P10/8420235	Draft Gear NC-390
6915380/G499A180P6	Yoke Only NC 390
8420236	Draft Gear and Yoke Assembly NC 390
8220283/8252488	Single Draft Gear & Yoke Assy MS-485-6A
8269424	Double Draft Gear & Yoke Assy MS-485-5A
8246352	Draft Gear MS-485-5A
G343B261P1/8253666	Draft Gear MS-485-6A
8246351	Draft Gear
8420237/G499A423P9	Draft Gear NC-391
8420238/G41D71673G2	Draft Gear And Yoke Assembly NC 391
8314758	Yoke Only NC 391
8062944	Lock Coupler
8069851	Thrower Coupler
8068119	Lifter Assembly Coupler
8081918	Coupler Pin 3 15/16 x 13 OAL
9500878	Coupler Pin 3 17/32 Dia. x 12 5/8 In Long
9500877	Coupler Pin 3-17/32 Dia. x 13 In Long
8057698	C10 Knuckle Pin
8055811	Knuckle Type E50BE
PRD16184064	Block for Non Alignment Coupler



We Offer a Full Line of Parts for the Complete Coupler Section



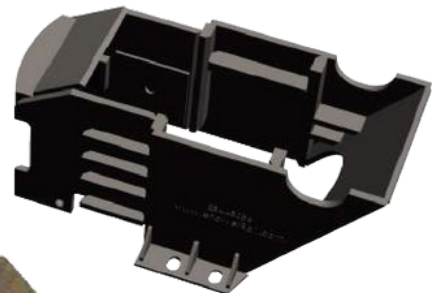
New and Unit Exchange Draft Gears



NC-390 Draft Gear



NC-391 Draft Gear



8448086 Pocket



Full Line of Coupling Parts



PRD16184064  
Alignment Block for Pocket







# BRYTE CHOICE | AFRICA

INTERNATIONAL IMPORTERS AND EXPORTERS OF ENGINEERING MERCHANDISE  
SINCE 1986

## DOOR - LOCOMOTIVE FLOORING

Complete Line of PRD Locomotive Cab Flooring.

Provides Slip Resistance, Durability and a Permanent Solution. The Light Weight Aluminum 4' X 8' Panels are Coated with a Proprietary Blend of Minerals and an Abrasive Epoxy Grit. Providing Strength, Durability, and Safety in Locomotive Cabs.



## DOOR - BATTERY GRATING

PRD16184575 - 1" Fiberglass Sheet

PRD16184576 - 1 1/2" Fiberglass Sheet



## DOOR - WEATHER STRIPPING

Complete Line of Weather-Stripping and Enhanced Weather-Stripping Seals

P/N	Description
40014788	SD70 Rear Cab Window and Cab Windshield 15 Ft
40014788	SD70 Rear Cab Window and Cab Windshield 15 Ft
8286959	Weatherstripping Sponge Rubber 5/32 x 1/2 x 50Ft
8329872	Weatherstripping 7 Ft 4 Inch long
8419908	Number Board Weatherstripping 80", 1/8" Groove
9544282	Hinge Guard Weatherstripping 58 7/8"
6979365	SD60, 70, 80 Cab Door Overlap 74 7/16 x 21 7/16
8489788	Hood & Sanding Door 10 Ft. Lg 1/8" x 1/4" Groove
9544282	Hidge Door Guard 58 7/8 Long



## DOOR - CAB

Complete Line of Cab Doors, and Windows

PowerDoor is Aluminum that Will Not Rust! Complete with Oversized Frame and Lock and Wiper holes already Pre-drilled!

P/N	Description
8461881PRD	Alum. Door with Frame Only
9526353	Glass for Door and Windshield
8284665	Lock Assembly Keyed
8465525	Lock Assembly Non Keyed
PRD17164	Slide Lock
9528757	Window Side 16 x 26 1/4



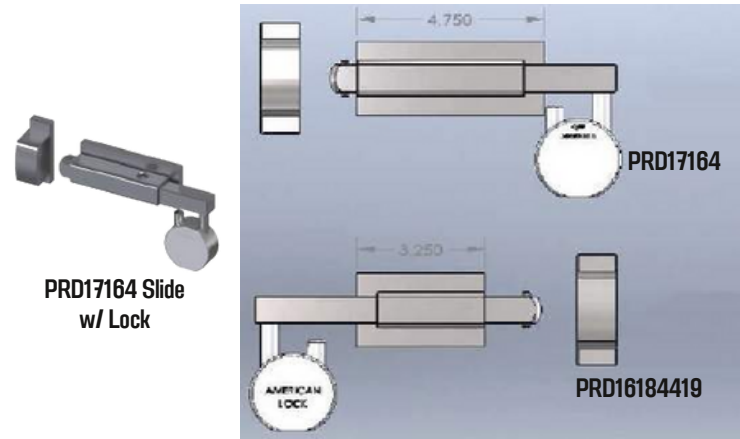
## DOOR - LATCHES & LOCKS



8158536 Door Latch Assembly

8278056 Slide Lock

- Improved Lever Design for Smooth Operation
- Advanced Painting Method for Extended Life
- Passenger & Class 1 Approved



Modesty Lock  
Special Keyed Versions & Other Styles Available



# BRYTE CHOICE | AFRICA

INTERNATIONAL IMPORTERS AND EXPORTERS OF ENGINEERING MERCHANDISE  
SINCE 1986

## DOOR - LOCOMOTIVE CARBODY

Complete Line of Enhanced Fiberglass Doors

Doors are Fiberglass in lieu of steel. Will Not Rust and reduced weight minimizes injuries related to these products.

**60% OR MORE Lighter than Steel Doors!!!**



<u>P/N</u>	<u>Description</u>	<u>Length</u>	<u>Application</u>
9555859	Battery Door	52"	GP/SD Styles - Eng'r & Helper
9321887	Air Brake Door	63"	GP/SD Styles - Helper Side GP/SD
9321884	Air Brake Door	75 1/2"	Styles - Eng'r Side
10584100	Cab Fresh Air	28 3/4"	SD Styles - Helper Side
10584138	HVAC Door	64 7/8"	SD Styles - Helper Side
40034382	Battery	48 3/4"	SD Styles - Helper Side
10576735	Air Brake	64 7/8"	SD Styles - Eng'r Side
40019273	Air Brake	28 3/4"	SD Styles - Eng'r Side
40121076	Battery	27"	SD Styles - Eng'r Side
10666450	Air Brake	29 1/4 29	SD Styles - Eng'r Side
10666451	HVAC w/Vents	1/4	SD Styles - Eng'r Side

## ELECTRIC SEMI-CONDUCTOR TESTER

### DST5000 Tester

- Test SCR's/Thristors
- Test Silicon Diodes
- Test Transistors/IGBT's
- Test Rectifiers
- Test IGTS's



### Three Very Important Tests:

- Adjustable from zero to 5000 Volt for testing Forward Blocking. A digital Ammeter indicates leakage current at semiconductor voltage rating.
- Adjustable from zero to 5000 Volt for testing Reverse Blocking. A digital Ammeter indicates leakage current at semiconductor voltage rating.
- Adjustable voltage for Gating or Firing devices. A digital DC Voltmeter indicates actual gate trigger voltage (Vgt). A digital DC Ammeter indicates actual gate current (Igt).

## ELECTRICAL - ELECTRONIC

Complete Line of Quality Electrical, Lighting, Resistors, Diodes, Thyristor's and other related components



<u>P/N</u>	<u>Description</u>
40048214	Insulating Diode Boot
40029131	AR10 Diode Negative
40029132	AR10 AR11 Diode Positive
40032602	AR20 Diode Positive
40032603	AR20 Diode Negative
40053999	Diode Positive
40032602	Diode Negative
8374003	AR10 Transformer
9561605	AR11 Transformer
8380922	Resistor AR10 50W 5 OHMS
8429166	Resistor 400W 3.75 OHMS
8004092	Walkaway Step Light
8004613	Engine Room Light Globe Glass
8332375	Rubber Standard Lamp Base 4 Holes
8332374	Rubber Standard Lamp Base 2 Holes
8207382	Engine Room Guard and Shade Assembly Lamp
8047227	Guard Assembly Cage
8228323	Number Light Socket Lamp - Yellow Rubber
8332375	Socket Lamp, 4 Holes, Rubber, Standard Base

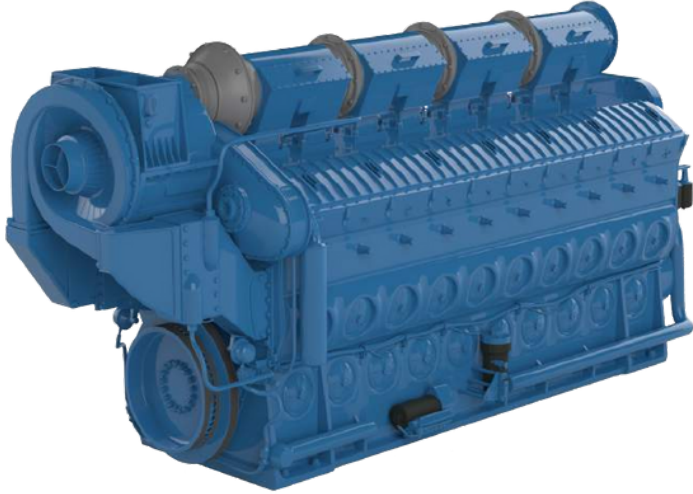


# BRYTE CHOICE | AFRICA

INTERNATIONAL IMPORTERS AND EXPORTERS OF ENGINEERING MERCHANDISE  
SINCE 1986

## ENGINES

### Complete Line of "True Blue™" Quality Remanufactured Engines



Our Product Line offers a complete line of Remanufactured Engines and Engine Components for the Rail Industry.

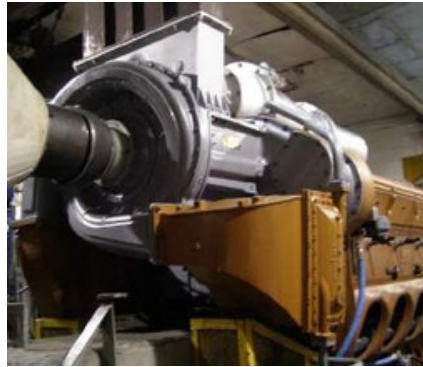
We Offer a wide range of 567 - 645 - 710 and 7FDL Type Engines that can support most programs. Services include Unit Exchange, Remanufactured Outright and Repair/Return.

All Engines are mounted on a Dynamometer to ensure the end user will have a "TRUE BLUE™" Turn-Key Engine.

Our shop is Certified AAR M-1003 and the Quality and Experience of our staff has earned approvals by most Class 1, Class II and Class III and International Railroads.



All Engines are Dyno Tested in our Newly Upgrade 5,000 HP EFI Capable Dynamometer to ensure Quality and Reliability



Experience is the key



We also offer FULL Service & Field Support for rebuilding Engines in the Field including Line Boring



**QUALITY**  
& RELIABILITY  
IS JOB #1



# BRYTE CHOICE | AFRICA

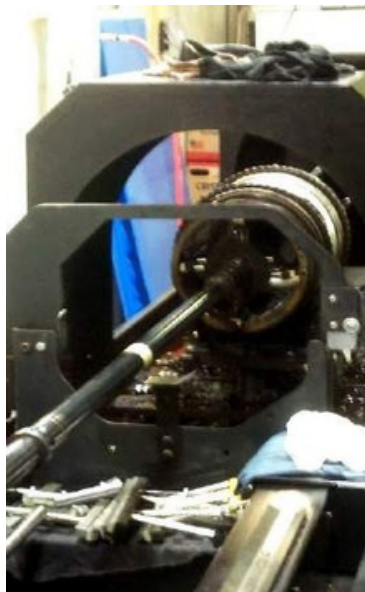
INTERNATIONAL IMPORTERS AND EXPORTERS OF ENGINEERING MERCHANDISE  
SINCE 1986

## ENGINE - POWER ASSEMBLIES & HLP UNITS

Complete Line of "True Blue™" Quality Remanufactured Power Assemblies, HLP's, Cylinder Heads and other related parts



Machining, Re-Qualifying Cylinder Heads



Honing and Re-Qualifying Liners



Assembly and testing of all components



Complete Line of Premium New Power Assemblies  
AAR Certified Quality

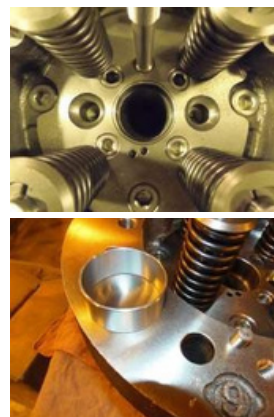
- Machined & Assembled in USA
- Trademark on Diamond 9 Head
- Raw materials meet or exceed current OEM Specifications
- Proven Field Approvals with multiple OEM Builders ,
- Class 1, Regionals, Shortlines & Internationally throughout the world
- Water jackets are thoroughly inspected via bore scope to ensure no debris or casting sand remains.
- Over 39 checkpoints are measured and documented to ensure quality conformance
- State of the art casting techniques reduce porosity and maintain excellent coolant flow
- State of the art casting techniques reduce porosity and maintain excellent coolant flow



Diamond 9 Head

Type	New P/A	UX P/A	New HLP	UX HLP
567B	No	Yes	No	Yes
567BC	No	Yes	No	Yes
567C	Yes	Yes	Yes	Yes
567CE	Yes	Yes	Yes	Yes
645E	Yes	Yes	Yes	Yes
645E3	Yes	Yes	Yes	Yes
645E3B	Yes	Yes	Yes	Yes
645E3C	Yes	Yes	Yes	Yes
710	Yes	Yes	Yes	Yes

\*Please Call Us for Our Line of EPA Tier Packs\*



Diamond 9 Head Offers  
Universal Design 645 & 710  
40021329 Complete with Valves  
40021327 Bare Head Only



## ENGINE PARTS OFFERING

Complete Line of New Power Assembly & Related Components  
Below is a sampling of our broad range of offerings

<u>P/N</u>	<u>Description</u>	<u>New</u>	<u>UX</u>
8415993	Liner Cast Iron 645	Yes	Yes
9318833	Liner HUB 645	Yes	Yes
9090233	Liner Chrome 645	Yes	Yes
9546509 - 40014531	Liner HUB 710	Yes	Yes
40060841	Fork Rod	Yes	Yes
9544257	Blade Rod	Yes	Yes
8367800	Carrier 645	Yes	Yes
40006129	Piston Tin Plated HURG Roots	Yes	No
40006130	Piston Tin Plated HURG 645E3	Yes	No
40006131	Piston Tin Plated HURG 645E3B	Yes	No
40033365	Ring Set CI Liner 645	Yes	No
9323296	Ring Set Chrome 645	Yes	No
8269842	Piston Pin 645E	Yes	Yes
40078951	Piston Pin 645E3B	Yes	Yes
8268641	Lower Liner Insert 645	Yes	No
9316139	Lower Liner Insert Hi HP	Yes	No
9583686	Gasket Install Kit Power Assy	Yes	No
9581924	Cyl. Head Seat Ring Viton	Yes	No
G121X1306	Rotator Valve Cylinder	Yes	No
G140X1063 / G140X1073	Piston Crown	Yes	No
G142X1050	Piston	Yes	No
G142X1052	Piston Pin	Yes	No
G7FDL Style	Jackets & Liners		
G7FDL Style	Short Packs and Full	No	Yes



- Camshafts
- Crabs & Bolts
- Cross Heads
- Cylinder Test Valves
- Cylinder
- Engine Protectors
- Fuel Lines
- Fuel Pumps
- Gears
- Hand-Hole Covers
- Heads
- Heads
- Liners
- Oil Lines
- Oil Pumps
- "P" Pipes
- Piston & Rings
- Push Rods
- Rods/Carriers
- Water Elbows
- Water Jumpers
- Water Pumps

### Common Stock Parts

<u>P/N</u>	<u>Description</u>
8028006	Thrust Collar 645
8039842	Lube Oil Line
8048880 - Handle	Cylinder Test Valve 645 T-Handle
8085260	Valve Bridge Assembly
8135330	Trust Washer 645
8160209	Fuel Line
8195996	Flex Coupler
8206804	Water Jumper 567C
8414444	Water Elbow
9093027	Water Jumper 645
9319504	Rocker Arm Assy Injector 645
9319505	Rocker Arm Assy Exhaust 645
9544046	Thrust Collar 710
9546230	Rocker Arm Assy Injector 710





## ENGINE PARTS OFFERING

Complete Line of New Power Assembly & Related Components  
Below is a sampling of our broad range of offerings

### Common Stock Parts

<u>P/N</u>	<u>Description</u>	<u>P/N</u>	<u>Description</u>
9546232	Rocker Arm Assy Exhaust 710	XXXXX	CrankShafts EMD-Style & GE-Style
9549577P	Pipe 567	8261194	Cam Segment 567/645 Non Hardened Engine
9549578P	Pipe 645	8419849	Cam Segment 567/645 Non Hardened Engine
9581924	Cylinder Head Ring Viton	8320994	Block Assembly Camshaft Drilled Flange
40036607	Cylinder Test Valve 710	8320995	Block Assembly Camshaft Plain Cap
40046561P	Pipe 710	8476507	Main Bearing Cap Center 645
40102453	Trust Washer 710	8476508	Main Bearing Cap 12C 645
G114X1218	Bonded Drive Couplings	8476509	Main Bearing Cap Intermediate 645
G116X1114 / G116X1115	Cam Segment	8476510	Main Bearing Cap Rear
G124X1058 / G124X1068	CrossHeads	9541514	Main Bearing Cap Intermediate 710
G140X1826-1 / G140X2950	Fuel Line	9541512	Main Bearing Cap Center 710
G150X1232	Linkage	9541511	Main Bearing Cap IRear 710
PRD16184502	Oil Sampling Valve 1/4 NPT		



### Cylinder Test Valves



- Class 1 Approved Design
- Solid One Piece Machined Nut in lieu of Welded Nut
- Designed for 567 – 645 and 710 Series Engines
- Utilizes Standard 5/8" Socket 6 or 12 Point

8048880PRD  
40036607PRD



8048880 T-Handle Design Also Available



We stock full Line of Remanufactured Crankshafts and Cam Shafts



# BRYTE CHOICE | AFRICA

INTERNATIONAL IMPORTERS AND EXPORTERS OF ENGINEERING MERCHANDISE  
SINCE 1986

## ENGINE PUMPS

Complete Line of New and "True Blue™" Unit Exchange Water and Oil Pumps Utilizing Premium Parts and Components

<u>P/N</u>	<u>Description</u>	<u>Application</u>
9516925	Water Pump Left Hand SMALL	Roots Blown
9516924	Water Pump Right Hand SMALL	Roots Blown
9503461	Water Pump Left Hand Small	Turbo 16-567/12-645
8296348	Water Pump Right Hand Small	Turbo 16-567/12-645
9503461	Water Pump Left Hand Small	High Capacity
9332825	Water Pump Left Hand Large	Turbo 16-645 - 710
9510677	Water Pump Right Hand Large	Turbo 16-645 - 710
40059826	Water Pump Right Hand	Tier 1
40054890	Water Pump Left Hand	Tier 1
125X1111	Water Pump	Unit Exchange
8176033	Piston Cooling Pump	8-567/8-645E
8122947	Lube Oil / Piston Pressure	12-567 / 8-645E
8122949	Lube Oil / Piston Pressure	16-567 & 16-645 Roots 12-645 Turbo
8296366	Lube Oil / Piston Pressure	16-567 / 16-645 / 12-710
40055149	Scavenging Oil Pump	16-710G



Balancing Impeller



Precise Positioning



Torquing per MI



Precise Production



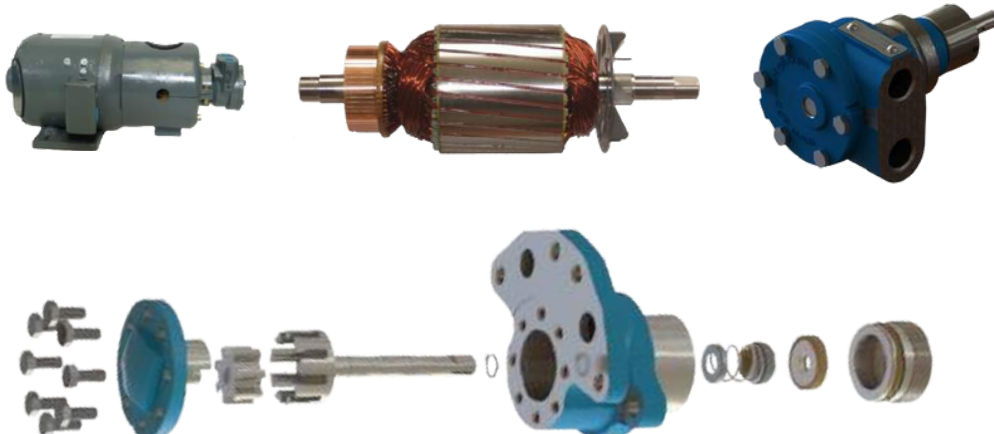
# BRYTE CHOICE | AFRICA

INTERNATIONAL IMPORTERS AND EXPORTERS OF ENGINEERING MERCHANDISE  
SINCE 1986

## ENGINE PUMPS

Complete Line of New and "True Blue™" Unit Exchange Fuel Pumps Utilizing Premium Parts and Components

<u>P/N</u>	<u>Description</u>	<u>Comment</u>
5540387	1/4HP DC Fuel Pump Motor	with New Armature
4947308	3/4HP DC Fuel Pump Motor	with New Armature
8296428	1/4HP DC Fuel Pump & Motor	with New Armature
40042770	3/4HP DC Fuel Pump & Motor	with New Armature
8498154	Soak Back Pump 1.7GPM	Threaded Connection
8152343	Soak Back Pump 1.7GPM Assy with Motor	Threaded Connection
8498155	Soak Back Pump 1.7GPM	Flanged Connection
8411403	Soak Back Pump 1.7GPM with Motor	Flanged Connection
8498156	Soak Back Pump 3 GPM	Flanged Connection
8492180	Soak Back Pump 3GPM Assy with Motor	Flanged Connection
40009239	Soak Back Assembly 3/4 HP 3GPM	Flanged Connection
8080284	Fuel Pump 4GPM	1/2NPT Threaded Connection
8422951	Fuel Pump 6GPM	Flanged Connection
8425609	Fuel Pump & Motor 3/4HP 6 GPM	Flanged Connection
40042770	Fuel Pump & Motor 3/4HP 6 GPM	Flanged Connection
40122943	AC 4GPM Transfer Pump	
40095692	AC 4GPM Transfer Pump	
132X1750	AC Transfer Pump	
123X1645	Fuel Pump	Unit Exchange
132X1535	Fuel Pump	UX - Bendix Type
149X1014	Fuel Pump	Unit Exchange



## ENGINE GEARS

Complete Line of New Engine Gears



<u>P/N</u>	<u>Description</u>
8483944	Drive Gear 58T
8543203	Drive Gear 58T
8483945	Drive Gear 58T
8069019	Drive Gear 79T
8360843	Drive Gear 79T
8069014	Drive Gear 79T
8360839 / 8141909	122 Acc. Drive Gear
8416930	Starter Ring Gear 265T
40051536	Starter Ring 265T
8416930-PRD3PC	Starter Ring 265T 3pc.







# BRYTE CHOICE | AFRICA

INTERNATIONAL IMPORTERS AND EXPORTERS OF ENGINEERING MERCHANDISE  
SINCE 1986

## ENGINE PROTECTORS

Complete Line of New and Remanufactured "True Blue™" Engine Protectors

P/N	Description
9332828UX	Turbo Delta P
8446372UX	Turbo Type P
8474255UX	Roots Type P
9506013UX	Roots Delta P
8362040UX	Crankcase Monitor
8370362UX	Crankcase Monitor



P/N	Description
9535870	Turbo Delta P Rebuild Kits
9535868	Turbo Type P Rebuild Kits
8467306	Roots Type P Rebuild Kits
9535869	Roots Delta P Rebuild Kits

## FANS - ENGINE COOLING & GRID

Full Line of New and Remanufactured "True Blue™" Engine Fans and Electrical Grid Fans

P/N	Description
5526299	36" 12HP 10 Blade
8311479	48" 28HP 6 Blade
8310416	48" 35HP 8 Blade
8379212	48" 35HP 9 Blade
9517833	48" 50HP 8 Blade
9576052	48" 50HP 8 Blade 2 Speed
8281907	48" 18HP Resistor Grid Fan
9514316	48" 36HP Resistor Grid Fan
8388333	48" Fan Guard
9096227	Air Cylinder 1 5/8 Stroke
9569860	Air Cylinder 3 1/2 Stroke
9558527	Fan Blade ONLY

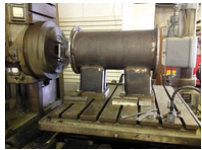


## EXHAUST PRODUCTS

Complete Line of Exhaust Chambers, Expansion Joints and Full Systems.



567 Chambers  
645 Chambers  
710 Chambers



P/N	Description	Comment
xxxxxxx	Chamber Assembly 12-645	Exhaust - Front
xxxxxxx	Chamber Assembly 12-645	Exhaust - Intermediate Front
xxxxxxx	Chamber Assembly 12-645	Exhaust - Intermediate Rear
xxxxxxx	Chamber Assembly 12-645	Exhaust - Rear
9316231	Chamber Assembly 16-645	Exhaust - Front
9316232	Chamber Assembly 16-645	Exhaust - Intermediate Front
9316233	Chamber Assembly 16-645	Exhaust - Intermediate Rear
9316234	Chamber Assembly 16-645	Exhaust - Rear

P/N	Description	Comment
8408987	Expansion Joint	10 Inch
8408985	Expansion Joint	14 Inch
40026936	High Heat ThermaSeal Gasket	10 Inch
40026937	High Heat ThermaSeal Gasket	14 Inch
40055466	High Heat ThermaSeal Gasket	Exhaust Stack
40026939	High Heat Therma Seal	Expansion Joint to Turbo
8287827	Gasket	Exhaust Stack
8287827B14	Bolt	Exhaust Stack
9338626	Bolt High Heat - 710 Engine	Exhaust Stack
9557143	NutTurbo Screen	645
40155024	Turbo Screen	710



### THERMASEAL

- Increased Thickness for INCREASED Bolt Retention
- Special Ceramic filled with proprietary material to increase working temperatures of approx. 2,000° F.



## EXHAUST PRODUCTS

Complete Line of Exhaust Chambers, Expansion Joints and Full Systems

<u>P/N</u>	<u>Description</u>	<u>Comment</u>
G128x1353-4	Manifold Section	for Single Pipe Manifolds for
G128x1404	Clamp	Single Pipe Manifolds for
G128x1413	Gasket At Turbo Transition	Dual Pipe Manifolds for
G128x1444-7	Transition Section	Single Pipe Manifolds 8
G128x1495	Complete Manifold	Cylinder - SS Version
G128x1496	Manifold Section - Leg 1R &	8 Cylinder - SS Version
G128x1497	4R Manifold Section - Leg 1L	8 Cylinder - SS Version
G128x1498	& 4L Manifold Section - Leg	8 Cylinder - SS Version
G128x1499	2R & 3R Manifold Section -	8 Cylinder - SS Version
G128x1629	Leg 2L & 3L End Cover	for Dual Pipe Manifolds for
G128x1635	Main "T" Section	Dual Pipe Manifolds for Dual
G128x1636	Bellows Connector	Pipe Manifolds for Dual Pipe
G128x1637	Gasket At Sections	Manifolds for Dual Pipe
G128x1638	Transition Section	Manifolds for Dual Pipe
G128x1639-1	V-Band Clamp	Manifolds 16 Cylinder Dual
G128x1640-2	Complete Manifold	Pipe
G128x1642-2	Complete Manifold	12 Cylinder Dual Pipe
G128x1648-1	Transition Section	for Dual Pipe Manifolds 8
G128x1657	Manifold Section - Leg 1R &	Cylinder - SS Version
G128x1658	4R Complete Manifold	8 Cylinder - SS Version
G128x1659	Manifold Section - Leg 1L &	8 Cylinder - SS Version
G128x1660	4L Manifold Section - Leg 2R	8 Cylinder - SS Version
G128x1661	& 3R Manifold Section - Leg	8 Cylinder - SS Version
G128x1670	2L & 3L Complete Manifold	12 Cylinder Dual Pipe
G128x1730	End Section	



## FASTENERS

Complete Line of Fasteners, Including Nuts, Bolts, Washers, Screws, and More

### General Fasteners

<u>P/N</u>	<u>Description</u>
PRD12538-0008	Fastener Kit (For 8004092 Step Light)
40055467	5/8-18 x 4 1/4 Chamber To Crankcase
8029567	1 1/4-12 x 2 3/4 Flange Retaining Bolt
8034693	3/8-24 X 2 1/2 - 7/16 Camshaft Bolt
8127868	5/8-18 x 1 3/4 Upper Forkrod Basket
8159340	Bolt Assembly Piston Pin to Connecting Rod
8242193	1 3/8-6 x 3 Axle Cap Bolt
8261288	3/4-16 x 11 5/16 Bolt
8266137	1 1/4-12 x 7 Special Bolt
8322027	1-8 x 7 1/2 4140 Gear Case Safety Strap T-Bolt
8460207	5/8-18 x 3 1/4 Assembly Exhaust Chamber Bolt
9085894	1 3/4-12 X 15 5/8 Crab Bolt
9338626	1/2-20 Exhaust Manifold Nut
GN170P25024	3/8-16 x 1 1/2 Coupling To Hub Bolt
G41A222526P1	1/2-13 x 2 1/4 Support To Turbo Bolt
G41A232240P1	1 1/2-6 x 5 Gear Case W/Hole In Center
G41B514152G2	1/2-13 x 3 13/16 12 Bolt Crown
G41B520026P21	1/4-12 x 8 11/16 Cylinder Hold Down Bolt
G84B522252P1	Banjo Bolt

### Specialty Locomotive Engine Bolts

<u>P/N</u>	<u>Description</u>
8300183	2 3/4-8 Nut Pinion Retaining D77
8127868	5/8-18 x 1 3/4 Bolt W/Washer
8259128	1/2-20 X 2 3/4 Bolt Lower Basket Assembly 17/32 ID X 1
8260114	Washer Connecting Rod
8460207	5/8-18 x 3 1/4 Bolt Assembly Chamber Exhaust 1/2-20
8487883	Locknut Lower Basket Assembly
G733P29024	1/2-13 x 1-1/2 12 Point Flange Bolt
GN22P39080	1-8 x 5 Hex Flange Head Bolt
GN56P16014	10-32 x 7/8 Pan Head Screw
GN733P33020	5/8-11 x 1 1/4 12 Point Flange Bolt
G41A221837P5	Washer Sealing
G41A221875P1	5/8-11 x 1 3/4 Bolt
G41A222526P1	1/2-13 x 2 1/4 Bolt Support To Turbo
G41A231439P15	5/16-18 x 5/8 Bolt Assembly
G41A235717P8	3/8-16 x 1 1/4 Indented Bolt
G41B513140P2	Stud Nozzle Hold Down
G41B513360G2	Screw w/ Button Tappet
G41B514152G2	1/2-13 x 3 13/16 12 Bolt Crown To Skirt

\*Many More Fasteners Available\*



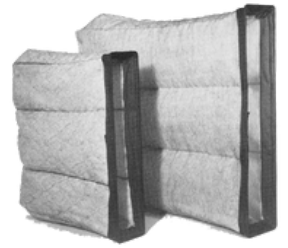
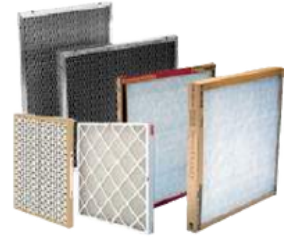
**FILTERS**

Complete Line of New Air, Fuel & Oil Filters

We can provide filters in broken case lots or save on Inventory Cost by purchasing kits

Air Filters

	<u>Type</u>	<u>Application</u>
AA-1	41C625459P1	12 x 8 Auxiliary Cabinet Cylindrical Element
AB-10	8363343	7 3/4 x 5 3/8 Salem #824 Coalescer Element
AE-1	41A216508P4	16 x 9 Engine Intake Cylindrical Element
AE-15	9316812	22 x 14 x 6 Pleated Paper Tri-cell Engine Intake Element
AE-25	9093588	36 x 14 x 6 Pleated Paper Tri-cell Engine Intake Element
AE-30	9093587	45 x 14 x 6 Pleated Paper Tri-cell Engine Intake Element
AE-520T	9331452	20 x 20 x 5 Pleated Paper Tri-cell Engine Intake Element
AE-529	9331454	29 x 20 x 5 Pleated Paper Tri-cell Engine Intake Element
AK-2	8402068	12 x 8 Cylindrical Air Compressor Intake
AK-3	8347199	19 1/2 x 5 7/8 x 8 Pamic-style Air Compressor Intake
DP240-0922	8310098	9 x 20 x 2 30/30 Carbody Pleated
DP240-1620	40087224	16 x 20 x 2 30/30 Carbody Pleated
DP240-1625	8367085	16 x 25 x 2 30/30 Carbody Pleated
DP240-2020	40083927	20 x 20 x 2 30/30 Carbody Pleated
DP240-2025	N/A	20 x 25 x 2 30/30 Carbody Pleated
EG-1	8470903	29 x 27 x 6 Standard Filter Baggie
EGP-1	40086945	29 x 27 x 6 Standard Filter Baggie - LONG LIFE 180 Day
EG-2	9522063	19 x 22 x 5 Small Filter Baggie
EGP-2	84C622136P1	19 x 22 x 5 Small Filter Baggie - LONG LIFE 180 Day
FP0922	8310098	9 x 22 x 3 3/4 Fiberglass Carbody Pad
FP0922MOD	8310098MOD	9 x 22 x 3 3/4 Paper Long Life Carbody Pad
FP1625	8380459/40083928	16 x 25 x 3 3/4 Fiberglass Carbody Pad
FP1625MOD	8380459/40083928MOD	16 x 25 x 3 3/4 Paper Long Life Carbody Pad
FP2020	8280211	20 x 20 x 3 3/4 Fiberglass Carbody Pad
FP2020MOD	8280211MOD	20 x 20 x 3 3/4 Paper Long Life Carbody Pad
HH-1734	22109618	17 x 34 x 2 HVAC Condenser Coil
ICE-1010	40041374	9 1/2 x 10 3/4 x 1 1/2 Cabin Electronics
PA2580	9093553	12 3/4 x 23 1/2 Engine Air Intake Cylindrical Element





# BRYTE CHOICE | AFRICA

INTERNATIONAL IMPORTERS AND EXPORTERS OF ENGINEERING MERCHANDISE  
SINCE 1986

## FUEL FILTERS

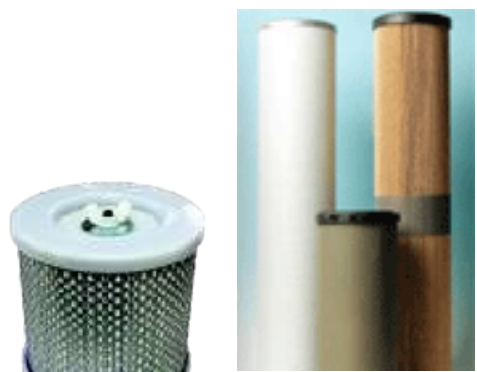
Type	Application	Type	Application
C-132XF-2	132X1250-2 6 1/2 x 30 Fuel Element Standard-life	BT267	9311037 4 x 6 Air Compressor Spin-on
CMAX-12	EMD type 6 1/2 x 30 Max. Capacity	C-12/C-24	8345482 6 1/2 x 30 Long-life Lube Oil
CMAX-184H	EMD type 6 1/2 x 30 Ultra-Max. Capacity	C-52	2X4223 6 1/2 x 30 Long-life
CMAX-24	EMD type 6 1/2 x 30 Max. Capacity	CMAX-12	EMD type 6 1/2 x 30 Long Life Lube Oil Filter
FF-1B	8299457 2 1/2 x 7 3/4 Roll-Pak Sock Element	CMAX-184H	EMD type 6 1/2 x 30 Long Life Lube Oil Filter Ultra Cap.
FH-1B	8302891 3.38 x 9.75 Fuel Filter with Spring	CMAX-24	EMD type 6 1/2 x 30 Max. Capacity
FJ-2S	8423132 3 3/4 x 7 Fuel Spin-on	CMAX-52	GE type 6 1/2 x 30 Max. Capacity
FJ-33S	40052587 3 5/8 x 8 1/2 Fuel Spin-on	FG-3W	9324489 3 x 5 1/4 Lube Oil Suction Strainer
FJ-44S	40053463 5 3/8 x 9 1/2 Fuel Spin-on	TL-2C	8322064 4 1/2 x 20 Turbo Standard-life Element
FL-2W	41B514746P1 2 3/4 x 8 3/4 Suction Strainer W/spring	TL-2FSO	40035123 5 1/2 x 12 Turbo Spin-on Long-life
FL-3W	40061834 2 3/4 x 8 3/4 Suction Strainer W/spring	TL-3C	8340000 3 x 7 1/4 Soak Back Spin-On Standard-life
HA-1P1S	132X1818 9 7/8 x 30 One Stage Fuel Filter	TL-3FSO	40058635 3 x 7 1/4 Soak Back Spin-On Long-life
HA-1P2S	9545152 9 7/8 x 30 Two Stage Fuel Filter		
HA-2P1SF	40074677 9 7/8 x 30 2-piece One Stage Fuel Filter		
HA-2P2SF	40056007 9 7/8 x 30 2-piece Two Stage Fuel Filter		
HAF-2P2SF	84D721178P2 9 7/8 x 30 2-piece Two Stage Fuel Filter		
HAF-3P2S-45	40106208 9 7/8 x 45 3-piece Two Stage Fuel Filter		
HE-2P1SF	EMD/GE type 9 7/8 x 30 2-piece One Stage Fuel Filter		
HMAX-2P1S	EMD/GE type 9 7/8 x 30 2-piece One Stage Fuel Filter Extended-Life		
HMAX-2P2SF	EMD/GE type 9 7/8 x 30 2-piece Two Stage Fuel Filter Extended-Life		
S-2	8275432 6 x 30 Roll-Pak Sock Element		
S-6	8281232 6 x 28 1/2 Flow-thru with Single Seal Sock Element		



## FILTERS - AIR LINE

### Full Line of Filters for Coalescing and Air Dryers

Type	Alt Part#	Application
10565991	75-018	Repair Kit
8363343	AB-10/160-004	Salem 824 Filter
40086698	125-132	Salem 824 Filter
40015249	5237-30-0	Salem 818 Filter
40028168	5664-013	Filter Element for 975-075
P40696	P40696	Filter Coalescer
P32208	P32208	Filter Final
40054494	P40968	Filter Element
G5X1109	PM5015	Main Element Kit for PM548
GP31309	PM31309	Aux Filter Kit





## FLEXI-FILTER GENERIC KITS

PowerKits will be custom assembled and tagged by the customers Road Unit number, making ease of ordering in the future.

In addition to Filters Kits, we also offer custom kits for Light Bulbs, Carbon Brushes, Wiper Blades, Fuses, and more.

### GP40 FILTER CHANGE OUT KIT

Qty	Type	Application
8	8345482	C-12/C-24 Lube Filter
1	8275432	S-2 Primary Fuel Filter
2	8423132	FJ-2S Secondary Fuel Filter Spin-on
1	8322064	TL-2C Turbo -Paper Cartridge
1	8340000	TL-3C Soak Back
1	9330535	AK-2 Air Compressor Intake Filter
1	8347199	AK-3 Air Compressor Intake Filter
1	9311037	BT-267 Air Compressor Lube Filter
2	8343161	Gasket Fuel Strainer/Soak Back
1	8358905	Gasket Primary Fuel
1	8268756	Gasket Lube Oil
1	8288955	Gasket Turbo

\* Note - May need EG-1 or EG-2 Baggies Intake Filters

### GP40 FILTER CHANGE OUT KIT

Qty	Type	Application
7	8345482	C-12/C-24 Lube Filter
1	8275432	S-2 Primary Fuel Filter
2	8423132	FJ-2S Secondary Fuel Filter Spin-on
1	8322064	TL-2C Turbo -Paper Cartridge
1	8340000	TL-3C Soak Back
1	*9330535	AK-2 Air Compressor Intake Filter
1	*8347199	AK-3 Air Compressor Intake Filter
1	9311037	BT-267 Air Compressor lube Filter
2	8343161	Gasket Fuel Strainer/Soak Back
1	8358905	Gasket Primary Fuel
1	8288955	Gasket Turbo



Filter Kit PRDX7005

### EMD SW1500 FILTER CHANGE OUT KIT

Qty	Type	Application
4	8345482	C-12/C-24 Lube Filter
2	8275432	S-2 Primary Fuel Filter
1	*9330535	AK-2 Air Compressor Intake Filter
1	*8347199	AK-3 Air Compressor Intake Filter
1	9311037	BT-267 Air Compressor Lube Filter
1	8343161	Gasket Fuel Strainer

### EMD GP38 FILTER CHANGE OUT KIT

Qty	Type	Application
7	8345482	C-12/C-24 Lube Filter
3	8470903	EG-1 Baggie Intake Filters
1	8275432	S-2 Primary Fuel Filter
2	8423132	FJ-2S Secondary Fuel Filter
1	*9330535	AK-2 Air Compressor Intake Filter
1	*8347199	AK-3 Air Compressor Intake Filter
1	9311037	BT-267 Air Compressor Lube Filter
1	9324489	FG-3W Fuel Strainer
1	8358905	Gasket Primary Fuel
1	8343161	Gasket Fuel Strainer

\*Note: The Above Tables Reflect a Sampling Only.  
Custom Kits will be made per YOUR specs.



# BRYTE CHOICE | AFRICA

INTERNATIONAL IMPORTERS AND EXPORTERS OF ENGINEERING MERCHANDISE  
SINCE 1986

## FUSES

Complete Line of Electrical Fuses for demanding Applications

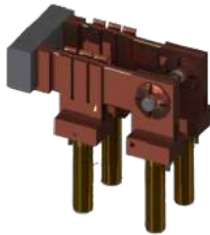
P/N	Amp	Application
8004544	150A	Aux. Generator
8004545	100A	Battery Charging
8004546	60A	Alternator Field
8004570	80A	Battery Field
8004548	30A	Generator Field
8060582	400A	Starter Motor
8042739	400A	Fuse Link Starter
8127051	150A	Boiler
8152419	60A	Battery Field
8346478	800A	AR10
8407729	425A	AR12
8414678	800A	Starter Motor
8439559	200A	Cooling Fan
9330514	450A	AR11 Transition AR11
9330515	450A	Transition
40028900	550A	AR11
40084060	500A	SD70 Air Compressor



## FUSE HOLDERS

Complete Line of Fuse Holders

P/N	Application
8280183	31-60 Amp 250 Volt
8029220	60-100 Amp 250 Volt
8280184	0-30 Amp 250 Volt
8280180	61-100 Amp 3/8"-16 x 1 3/4"
8280181	101-200 Amp 1/2"-13 X 2-1/4"
8280182	201-400 Amp 3/4"-16 X 3-1/4"
8280183	31-60 Amp 5/16"-18 x 1 3/4"
8280185	Switch Main Battery Knife Style



## GASKETS, SEALS AND RUBBER PRODUCTS

Complete Line of New Generation Gaskets, Seals and O-Rings

- Made with pure FKM and Viton® A-type material - NO fillers
- Injection molded for pure and high-precision fit with true reliability
- Superior performance through operating temperatures from -20°F to +400°F
- Resistance to oil, fuel, and additives
- Remains flexible in service and won't "set" like standard seals



Marman Seals

P/N	Description	P/N	Description
8479542	Marman 1/2 Inch	8479601	Marman 2 1/2 In
8479543	Marman 3/4 Inch	8479602	Marman 3 Inch
8479544	Marman 1 Inch	8479603	Marman 3 1/2 In
8479598	Marman 1 1/4 In	8479604	Marman 4 Inch
8479599	Marman 1 1/2 In	8406231	Marman 6 Inch
8479600	Marman 2 Inch		

### Dresser Seals

P/N	Description
G499A912AEP2	Dresser 1/2"
G499A912AEP3	Dresser 3/4"
G499A912AEP4	Dresser 1"
G499A912AEP5	Dresser 1 1/4"
G499A912AEP6	Dresser 1 1/2"
G499A912AEP7	Dresser 2"
G499A912AEP8	Dresser 2 1/2"
G499A912AEP9	Dresser 3"
G499A912AEP10	Dresser 3 1/2"
G499A912AEP11	Dresser 4"
G499A912AEP13	Dresser 6"





# BRYTE CHOICE | AFRICA

INTERNATIONAL IMPORTERS AND EXPORTERS OF ENGINEERING MERCHANDISE  
SINCE 1986

## GASKETS, SEALS AND RUBBER PRODUCTS



Pipe is always measured by the Outside Diameter (O.D.).  
Because a Marman Seal sits on the outside of the pipe, the I.D. of the Seal will be approximately the same size as the O.D. of the pipe.

COUPLING ASSEMBLY		COMPONENT REFERENCE	
Pipe Outside Diameter	Assembled Coupling Length	Complete Assembly (P/N)	Seal (P/N)
0.5"	4.50"	8476711	8479542
0.75"	2.50"	8479674	8479697
0.75"	4.50"	8470605	8479606
1.00"	2.875"	8470340	8479544
1.00"	6.00"	8476174	8479544
1.00"	7.50"	8472849	8479544
2.00"	4.00"	8474757	8479600
2.00"	7.50"	8479676	8479600
2.50"	4.00 "	8392458	8479538
2.50"	6.50"	8472617	8479538
2.50"	12.50"	8472616	8479538
2.50"	23.00"	8275374	8479601
2.50"	26.00"	8284779	8479601
2.50"	4.00"	9516671	8479601
3.00"	6.50"	8471160	8479539
3.00"	12.50"	8468179	8479539
3.00"	90°	8455470	8479539
4.00"	7.50"	8252895	8479541
4.00"	6.50"	8474741	8479541
4.00"	12.50"	8470341	8479541
5.00"	6.50 "	9559099	40068473

### Gasket Fuel Bowl Site Glass

- Made of pure FKM and Viton® A-type material - NO fillers
  - Can Run At 400°F Constant
  - Easy To Install, Conforms To Fuel Sight Bowl
  - Long Life Cycle Without Degrading
- \*Note: We Also Offer E8361381 Glass Bowl and E8104667 Clevis



### Head Seat Ring Technology

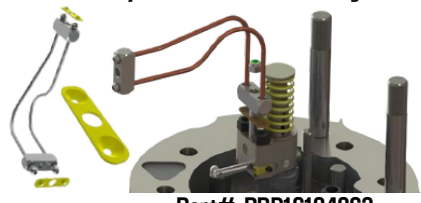
- Enhanced Proprietary Viton® Compound
- Enhanced /Redesigned VPS Viton® profile for Ultimate Sealing
- Field Reports of reduced and/or elimination of "Engine Souping"



P/N: 9581924PRD

### B-SureSeal™ - Fuel Line Gasket

- B-SureSeal™ material for both oil & fuel contamination
- Stop fuel leaks at the injector and manifold connections



Part#: PRD16184063

### Head to Liner Gasket

- Enhanced Grommet Design - Will NOT Fall Out
- Teflon Silicone Hi Heat B-SureSeal™ Integral Grommet Design Utilizing Glass-Filled PTFE
- 410 Stainless for Improved Cycling Performance (Non Copper Plated to Eliminate Oil Contamination)
- Improved Compression Set Performance
- Improved Operating Temperature Range -50°F TO +460°F



### Water Elbow & Seal

- Stops Water Leaks Associated with Old Style O Rings
- YellowSeal™ Material for Both Oil & Fuel Contamination
- Class 1 Approved



P/N: 40110618  
Seal for 8414444 Elbow



# BRYTE CHOICE | AFRICA

INTERNATIONAL IMPORTERS AND EXPORTERS OF ENGINEERING MERCHANDISE  
SINCE 1986

## GASKETS & SEALS

- Class I Approved
- 21 Gauge Stainless Steel "Formed Bead Design"
- Opposing "Formed Beads" act as a spring mechanism in heavy thermal cycling applications
- High Temperature Graphite Sealing Element is designed to fill and seal surface imperfections commonly found on manifold and engine block surfaces
- Enhanced and Improved design will not be "crushed or beat-out" due to heavy vibration or harmonics, and resists unloading and bolt torque loss, as is common with the standard double jacketed design



Enhanced Exhaust Stack Gasket  
P/N: 40055466

## GAUGES - AIR FLOW INDICATOR FUEL AND AMMETERS

Complete Line of Air Flow Indicators, Fuel Gauges, & Ammeters

P/N	Description
10601196	Air Flow Indicator
40017162	Air Flow Indicator
8195741	Air Flow Indicator
8387634	Air Flow Indicator, 60-160 lbs.
G84B104054P1	Air Flow Indicator
10590743	Ammeter Load Indicator SD60
40150894	Ammeter, Control Stand, SD40-E
8214188	Ammeter TM 0-1500 AMPS
8380058	Ammeter Traction Motor 0-1500AMP
8438032	Ammeter Load Gauge 0-1500AMP
8402426	Ammeter Traction Motor Load
9573315	Ammeter Load Indicator
10599378	Complex Gauge Assembly with AFM Indicator 4 1/2"
8315266	Compressor Gauge, Float Type



## GAUGES

Complete Line of Dry and Liquid Filled Gauges



P/N	Description
40031338	2 1/2" 0-100 PSI Dry Gauge Oil
8340547	2 1/2" 0-200 PSI Dry Gauge Air
40018397	3 1/2" 0-160 PSI Dry Gauge Oil
40018396	3 1/2" 0-200 PSI Dry Gauge Air
8015552	3 1/2" 0-160 PSI Dry Gauge Air
8032122	3 1/2" 0-100 PSI Dry Gauge Fuel Oil
8032123	3 1/2" 0-100 PSI Dry Gauge Oil
8037304	3 1/2" 0-160 PSI Dry Duplex Gauge Air
8047964	3 1/2" 0-200 PSI Dry Duplex Gauge Air
8231593	3 1/2" 0-200 PSI Dry Gauge Oil
8231594	3 1/2" 0-160 PSI Dry Gauge Oil
8380610	3 1/2" 0-200 PSI Dry Duplex Gauge Air
8387352	3 1/2" 0-160 PSI Dry Duplex Gauge Air
G41A304641ABP1	4" 0-200 PSI Liquid Gauge Oil
G41B536099P3	4" 0-100 PSI Liquid Gauge Fuel
8459294 8481962	4 1/2" 0-160 PSI Duplex Dry Gauge Air
8484326	4 1/2" 0-160 PSI Dry Duplex Gauge
9080722	3 - 4 1/2" 0-160 PSI Duplex Dry Gauge
9329370	2 - 4 1/2" 0-160 PSI Dry Duplex Gauge
9540228	4 1/2" 0-160 PSI Dry Duplex Gauge
	4 1/2" 0-160 PSI Duplex Dry Gauge Air







# BRYTE CHOICE | AFRICA

INTERNATIONAL IMPORTERS AND EXPORTERS OF ENGINEERING MERCHANDISE  
SINCE 1986

## GEARS

**Complete Line of New Pinion Gears, Bull Gears & Traction Gears, as well as a complete line of High Quality Engine Gears**

S. No.	Bull Gear	P/N	S. No.	Pinion	P/N
<b>Traction Gears &amp; Pinions</b>					
1	Gear - 65 tooth	8178812	2	PINION Gear - 12 tooth D77	8452310
3	Gear - 63 tooth	8402408	4	PINION Gear - 14 tooth D77	9556207
5	Gear - 62 tooth	40049185 / 8109579	6	PINION Gear - 15 tooth D77	40006705
7	Gear - 61 tooth	40049661 / 8184341	8	PINION Gear - 16 tooth D77	9556208
9	Gear - 60 tooth	40049660 / 8179295	10	PINION Gear - 17 tooth D77	9556209
11	Gear - 59 tooth	8184333	12	PINION Gear - 18 tooth D77	9556210
13	Gear - 58 tooth	40049658 / 8184378	14	PINION Gear - 19 tooth D77	9556211
15	Gear - 57 tooth	8184325 / 40049657	16	PINION Gear - 20 tooth D77	9556212
17	Gear - 56 tooth	8184396	18	PINION Gear - 21 tooth D77	9556213
19	Gear - 55 tooth	8184342	20	PINION Gear - 22 tooth D77	9556214
21	Gear - 52 tooth	8184332	22	PINION Gear - 25 tooth D77	9556215
23	Gear - 63 tooth	40051136 / 40051133	24	PINION Gear - 14 tooth D31	8179135
25	Gear - 62 tooth	40051132	26	PINION Gear - 15 tooth D31	8459295
27	Gear - 60 tooth		28	PINION Gear - 17 tooth D31	8206504
29	Gear - 58 tooth	40051126	30	PINION Gear - 15 tooth D29	8458508
31	Gear - 57 tooth	40051125	32	PINION Gear - 16 tooth D29	8341961
33	Gear - 70 tooth	40012160	34	PINION Gear - 17 tooth D87	40006706
35	Gear - 69 tooth	40049648	36	PINION Gear - 18 tooth D87	9332201
37	Gear - 67 tooth	40049648	39	PINION Gear - 19 tooth D87	9332202
40	Gear - 66 tooth	40049647	41	PINION Gear - 20 tooth D87	9332203
1	Gear - 90 tooth	G41C637598P1	2	PINION 21 Tooth	G41C637595P1
3	Gear - 91 tooth	G8837760 / G41B530121P1	4	PINION 20 Tooth	G84C614969P1
5	Gear - 92 tooth	G41C632784P2 / G8837724	6	PINION 19 Tooth	G41C632785P2
7	Gear - 93 tooth	G41C636682P1 / G88377526P1	8	PINION 18 Tooth	G41C635677P2 / G41C637903P1
9	Gear - 94 tooth	G41C637211P1 / G8837727P1	10	PINION 17 Tooth	G41C637180P1
1	Gear - 65 tooth	G41C635820P1	2	PINION 18 Tooth	G41C635796P1
3	Gear - 74 tooth	G41C632494P1	4	PINION 18 Tooth	G41C637399P1
5	Gear - 77 tooth	G41C632350P1	6	PINION 26 Tooth	G41C632349P1
7	Gear - 83 tooth	G41C636806P1	8	PINION 20 Tooth	G41C636447P6
9	Gear - 87 tooth	G41D735826P2	10	PINION 16 Tooth	G41D735825P1
11	Gear - 90 tooth	G41C632381P1	12	PINION 17 Tooth	G41C632382P1
13	Gear - 83 tooth	G41C637055P6	14	PINION 20 Tooth	G84C62083492
<b>Alt. Gears &amp; Pinions</b>					
1	Drive Gear 102T	G41C637055P6	2	PINION 43 Tooth	G41C635625P1
3	Drive Gear 102T	G41C637055P6	4	PINION 43 Tooth	G41C635800P1
5	Drive Gear 102T	G41C637055P6	6	PINION 43 Tooth	G41C632663P1
<b>Engine Gears</b>					
1	Drive Gear 58T	8483944	2	Drive Gear 79T	8069019
3	Drive Gear 58T	8483945	4	Drive Gear 79T	8069014
5	Drive Gear 79T	8360843	6	Drive Gear 265T	8416930
7	Drive Gear 113T	8360839 / 8141909			





# BRYTE CHOICE | AFRICA

INTERNATIONAL IMPORTERS AND EXPORTERS OF ENGINEERING MERCHANDISE  
SINCE 1986

## GENERATORS - MAIN AND AUXILIARY

Complete Line of New & "True Blue™" Main & Auxiliary Generators and Exciters

P/N	Description	New	UX	P/N	Description	New	UX
8405875	10Kw Aux Gen	Yes	Yes	GY27L2	Auxiliary Generator	No	Yes
8405875MOD	14Kw Aux Gen	Yes	Yes	GY27M2	Auxiliary Generator	No	Yes
8122750	18Kw DC Aux Gen	Yes	Yes	581	Auxiliary Generator	No	Yes
4979844	18Kw AC Aux Gen	Yes	Yes	586	Auxiliary Generator	No	Yes
9551383	18Kw AC Aux Gen	Yes	Yes	598	Auxiliary Generator	No	Yes
9533149	18Kw AC Aux Gen	Yes	Yes	GTA9	Main Alternator	No	Yes
3195473	24Kw AC Aux Gen	Yes	Yes	GTA11	Main Alternator	No	Yes
D12	Main Generator	No	Yes	GTA15	Main Alternator	No	Yes
D15	Main Generator	No	Yes	GTA16	Main Alternator	No	Yes
D22	Main Generator	No	Yes				
D32B & D32P	Main Generator	No	Yes				
D32E & D32E1	Main Generator	No	Yes				
AR10	Main Alternator	No	Yes				
AR11	Main Alternator	No	Yes				
AR15 - AR17	Main Alternator	No	Yes				
AR20	Main Alternator	No	Yes				



Full Line of Blower Wheels and Housing Assemblies also Available



## GENERATOR DRIVE SHAFTS



8184471 - 5 7/8" OAL  
8476944 - 15 5/8" OAL



8195996 Coupling



8234958 Compression Bushing  
or 16185106 Generator Bushing

## ADJUSTABLE AUXILIARY GENERATOR DRIVE SHAFT

Complete Line of New & "True Blue™" Main & Auxiliary Generators and Exciters

Now offering a simple solution for reducing inventory by utilizing an Adjustable Auxiliary Generator Drive Shaft.  
Our adjustable shaft offers the same flange mounting with adjustments of 9.34" to 11.10"

Replace FIVE different drive shafts with just ONE. 8227020 Drive Shaft 9.34"

- 9509579 Drive Shaft 9.625"
- 8253884 Drive Shaft 9.875"
- 10604516 Drive Shaft 9.969"
- 8227021 Drive Shaft 11.094"



P/N: PRD16186416



# BRYTE CHOICE | AFRICA

INTERNATIONAL IMPORTERS AND EXPORTERS OF ENGINEERING MERCHANDISE  
SINCE 1986

## HANDRAIL - CARBODY



## HEAT SHIELDS

Complete Line Of Heat Shields

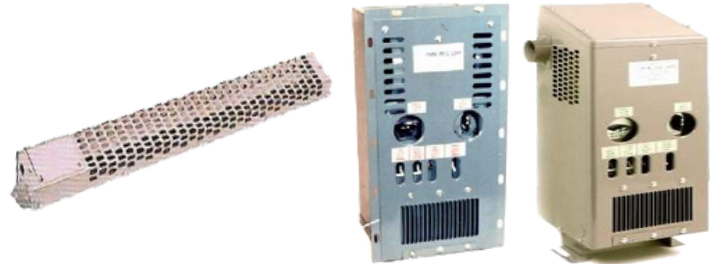
<u>P/N</u>	<u>Application</u>
40089234	SD70 Right Rear
40089235	SD70 Left Rear
40089236	SD70 Right and Left Front
40089237	SD70 Right and Left Front
40089238	SD70 Left Front and Right Rear
40109698	SD70 Z Type
8351251	Intermediate Rear Left Hand
8351254	SD70 Right and Left Front
8358827	Rear Left Hand



## HEATERS

Complete Line of Heaters including Free Standing, Wall Mounted and Sidewall.

<u>P/N</u>	<u>Description</u>	<u>Comments</u>
P5006B Series	Free Standing	3000W - 3750W - 4000W
40012336	Free Standing Stock Model	3000 Watt with Top Defrost With Sidewall Circuit Panel
40001549	Free Standing Stock Model	3000 Watt with Top Defrost NO Circuit Panel
PM5032	Wall Mounted	3000W - 3750W - 4000W
PM5002	Sidewall	Dual 660W & 1320W
PM5002-2	Sidewall Stock Model	Dual 750W & 1500W
PM5029	Control Switch	Dual Per Above
P24477	Circuit Breaker	65A 3 Pole
P21366	Heater Motor	5/16" Dia. Single Shaft
P21134	Heater Motor	5/8" Dia. Single Shaft
P20605-1	Heater Motor	5/16" Dia. Dual Shaft
P21159	Heater Motor	5/16" Dia. Dual Shaft
P24442-1	Heater Brush	2 per Set
P31118	Junction Box	Wall Heater
P31005	3 Position Switch	Junction Box





## PROVIDENT H1™ HIGH EFFICIENCY HEATER

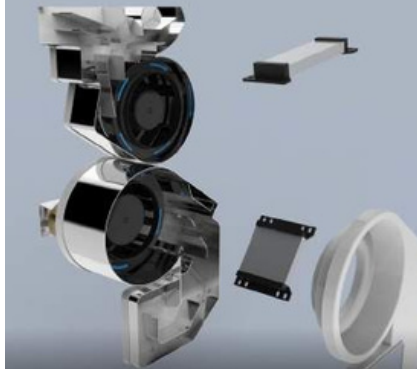
- Advanced ceramic material, enabling safe, powerful, and energy efficient heat transfer
- Energy efficient heating system and design
- PCB designed and controlled electronics & management system
- Up to 50% reduction in energy usage
- Up to 50% smaller in depth - adds floor space to Cab
- Modular design for fast access and easy repair of all components •Solid state controls for ease of operation
- UL Listed - AAR Approved Quality



Floor Mount - With or Without Defrost



Flush Mount



"True Blue™" Modular Design



Solid State UL Listed Controls

## HOSE - AIR



New line of AAR Air Hose and other related Air Brake components



Main Reservoir 1" Male NPT AAR M-618 LS4 Gladhand

P/N	Overall Length	Hose Size
MRL5064	34"	1 1/8
MRL5209	35 1/2"	1 1/8
MRL5640	36"	1 1/8

Note: Above are Common Hoses - We offer a full Line from 25" to 43"



Actuating Application & Release 1/2" Male NPT AAR M-618 LS4 Gladhand

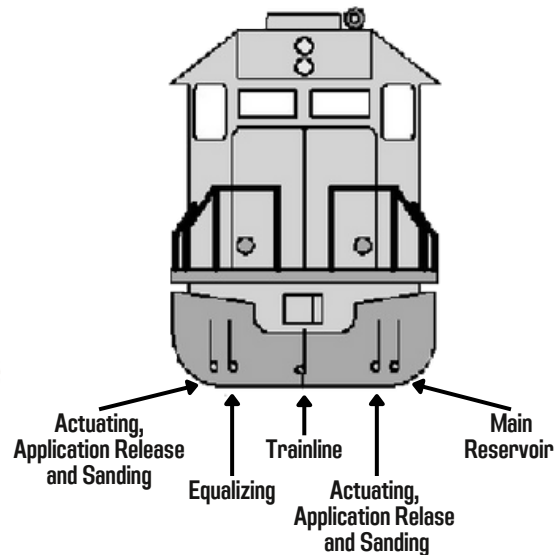
P/N	Overall Length	Hose Size
HAL5880	34"	3/4 (1/2)
HAL5217	36"	3/4 (1/2)

\*Note: Above are Common Hoses - We offer a full Line from 25" to 36" OAL



Train Line 1 3/8" Hose 1 1/4" Male NPT AAR M-601 FP5 Gladhand

P/N	Overall Length	Hose Size
HFR12422	22"	1 3/8
HFR12433	33"	1 3/8





# BRYTE CHOICE | AFRICA

INTERNATIONAL IMPORTERS AND EXPORTERS OF ENGINEERING MERCHANDISE  
SINCE 1986

## HOSE - AIR



P/N	Overall Length	Hose Size
N777733	26-1/8"	1 1/8
N779362	27"	1 1/8
N777583	28 1/8"	1 1/8
N777734	37 1/8"	1 1/8
N777866	59 1/8"	1 1/8

### Gaskets - Gladhand & Flange Style Hoses

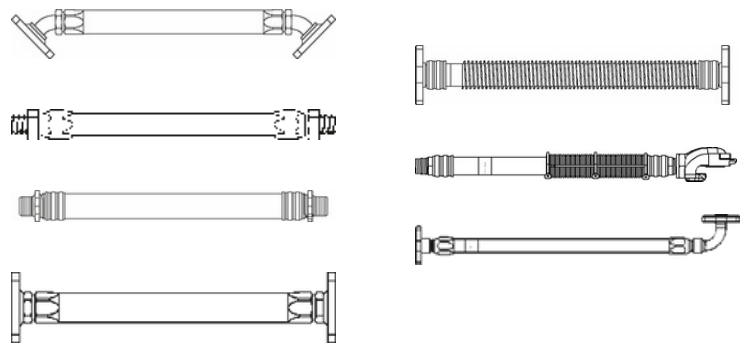
P/N	OEM Ref#	Comment
W563952	739882	FS5 Gasket
N73103	Car Hose	1/2" Flange
N731034	Car Hose	3/4" Flange
N731056	Car Hose	1" Flange
N731061	Car Hose	1 1/4" Flange



## HOSES - FREIGHT CAR

### Complete Line of Freight Car Hose

Broad Line of Freight Car Hoses AAR M-601 & M618  
Approved. Please call us for more information on replacement  
Air Hose Parts



- Male to Male
- Male to Female
- Female to Female
- Flange
- Wire Re-Enforced
- Swivel Fittings
- Coil Guards
- Full Line of Adaptors

## HOSE - CUSTOM KITS

Full Line of Special Kits that can be customized to any  
requirement



## HOSE

Full Line of Engine Related Fuel, Oil and Air Hoses

P/N	Application
9320120	Detector to Water Pump
9320121	Detector to Water Pump
9320122	Detector to Water Crankcase
9319341	Governor Oil Drain
9319342	Lube Oil
8155981	Wiper
140X2954	Fuel
140X1553	Turbo Oil Feed
140X2935	Oil Drain



## HOSE STRAP



AAR 4006 High Strength Synthetic Strap  
P/N: NY778117



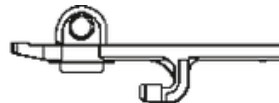





# BRYTE CHOICE | AFRICA

INTERNATIONAL IMPORTERS AND EXPORTERS OF ENGINEERING MERCHANDISE  
SINCE 1986

## DUMMY HOSES

### Complete Line of Dummy Hoses & Flanges

P/N	Overall Length	Hose Size	
N777356	12-5/8"	1 1/8	
N777355	15 1/8"	1 1/8	
N777357	16 5/8"	1 1/8	
N777358	17 5/8"	1 1/8	
N777889	27 5/8"	1 1/8	

P/N	Type	Vent Holes	Chain Length	
N739823	F	Yes	N/A	
N703124	F	Yes	7 1/2"	
N7718839	F	Yes	18"	
N739709	F	No	N/A	
N700303	F	No	7 1/2"	
N781168	F	No	10"	
N780690	F	No	12"	
N739824	H	Yes	N/A	
N703123	H	Yes	7 1/2"	
N756979	H	Yes	14"	
N739822	H	Yes	33 1/2"	
N739710	H	No	N/A	
N700304	H	No	7 1/2"	
N739825	L&E	Yes	N/A	
N703125	L&E	Yes	7 1/2"	
N703406	L&E	Yes	16"	

## HOSE - SAND

P/N	Description	Hose Size
8328950	50 Ft. Roll Sand Hose	1 5/16
9097530	25 Ft. Roll Sand Hose	1 5/16



"Safe Sand" Gold Series New Generation  
Utilizing Cloth Weave Technology  
Eliminating Wire Related Injuries

## HOUSINGS

### Complete Line of Ditch, Headlight, Step Light, MU Housings and Receptacles.

P/N	Application	
8650814	Ditch Light Housing	
40043668	Ditch Light	
G41B549606P1	Ditch Light	
235852	Headlight Vert. & Horz. Mount	
8332339	Headlight Vertical Mount With Shield	
40046500	Headlight Dual SD70	
8382662	Contact MU	
8079302	Cover - MU Receptacle	
9572733	MU Dummy Receptacle	
G84A201176P3	MU Dummy Receptacle with back plate	
8242444	MU Receptacle Complete Assembly - 27 Pin	
8004092	Step Light Assembly	
G41A200358P1	Step Light Assembly	
10590984	Step Light Assembly	
10605432	FRA Red Lens Light Assembly	
G41A205337ABP2	Light Assembly Clear Lens	
40016750	Brake Light Indicator	
8351700	MU Receptacle - No Contact Pins	

### Universal Ditch Light Housing - P/N: PRD16184911

8650814 / 40043668 - 2 Position Door Latch Flush Mount

40052369 / 40069142 - 4 Position Door Latch with Flush Mount

### Benefits:

- Dual Mount - Flush or Conduit from Bottom (2) 1/4" NPT Mounts
- High Temperature Silicone 10610987 Gasket Included
- (4) Four Position Door Latch
- Reduction in Inventory
- High Quality Casting



Also offering Ditch Light Housing G41B549606P1, G41B549606P3, and Ditch Light Assembly 6911151



# BRYTE CHOICE | AFRICA

INTERNATIONAL IMPORTERS AND EXPORTERS OF ENGINEERING MERCHANDISE  
SINCE 1986

## INJECTORS

### Complete line of New and Remanufactured Fuel Injectors

P/N	Comment
9081163	567B/567BC
8478048	567C
9081164	567D
8478045	645E
8478046	645E3
8478053	645E3B
8478055	645E3B Eco
9561950	645F3B
G123X1110-2	7FDL-Style
G132X1710	Bryce Single Pump
G132X1645	Bryce Double Pump
G132X1715	Bendix Single Pump
G132X1535	Bendix Double Pump

### ECOTIP "Green Tag" Injectors

OEM Ref #	ECOTIP Ref #	Comment
8478049	40083527/40078996	567 A,B,BC,C,E Fuel Efficient Tip
8478045	40083524/40078993	645E Roots Fuel Efficient Tip With Calibration Slide
8478046	40083525/40078994	111 Fuel Injector 12,16, 20 Cylinder Low Smoke
8478055	40083533/40079002	111 Fuel Injector Fits 645E3B

Green Tag Injectors Offer Very Precise Beginning and Ending Of Fuel Injection. This Results In Fuel Savings At Full Load and On Medium Duty Cycle. Reliability and Durability Is Also Increased Due To Lower Peak Cylinder Combustion.



8431626 Holding Rack For Injectors

### "Black Tag" Extended Idle "Switcher" Injectors

Black Tag P/N	Engine Application	Body Style
4991632	567B, BC, C	No-line
4991635	567C	1 Narrow groove
4991629	645E, 567C	1 Narrow groove



Black Tag Injectors Are Designed To Overcome Specific Challenges Under Various Applications. The Benefits Include Reduced Emissions, NOx and Smoke With Minimal To No Fuel Penalty In Certain Applications. The Injectors Also Help To Reduce "Souping" During Extended Idle Situations.

## INJECTOR CONVERSIONS

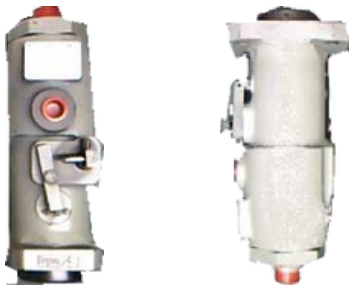
### Complete line of Conversions and Replacement Injectors

Complete line of MFI to EFI Class 1 style Conversions and EFI Replacement Injectors. Upgrade your Mechanically Fuel Injected EMD or GE Engine to a state of the art Electronically Fuel Injected Engine. If your goal is to save fuel, our Engine Management Kit (EMS) has proven to reduce fuel consumption over 3%! If your goal is to reach a higher EPA Tier level, our EMS kit has transformed a Tier 0 engine into Tier 2 and added performance capabilities not available with mechanical fuel injection.



"ECU" Engine Management System With Proprietary Interstate Diesel Software

- Convert Mechanical Fuel Injection to Electronic Fuel Injection
- Lower fuel cost, increased performance
- Manufacture NEW electronic unit injectors
- EMD 710 and 645 engines and GE 7FDL
- No EUI cores needed to convert
- Replace mechanical / hydraulic governor with ECM
- Use ECM to control engine
- Install monitor in cab
- Achieve higher emission standards



Full Line of Injector Parts

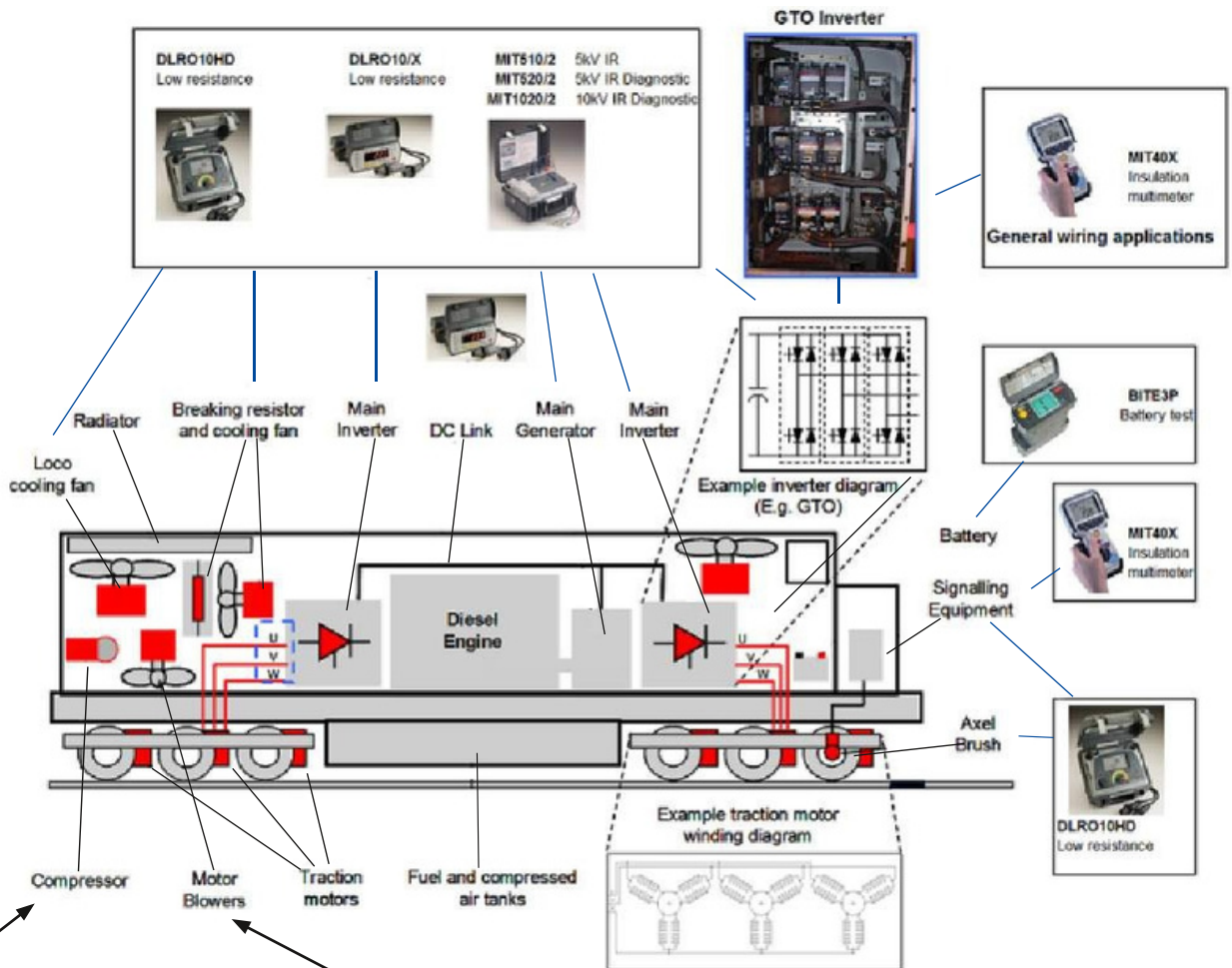


## INSULATION TESTERS

Complete Offering of Electrical and Electric Measuring Equipment

### Improved 5 and 10kV insulation testers

- Smaller size and lighter weight
- Ramp test
- Easier to use
- 3mA output power
- Rotary switch dial
- Accuracy where it matters most
- Unique dual case design
- Super fast battery charge
- Intuitive operation



DR0200 - MIT 5kV & 10kV



DL010 Low Resistance





# BRYTE CHOICE | AFRICA

INTERNATIONAL IMPORTERS AND EXPORTERS OF ENGINEERING MERCHANDISE  
SINCE 1986

## JOURNAL BOXES - HYATT & ROLLER WHEEL BEARINGS

Complete Line of AAR Quality New and Remanufactured Hyatt Journal Boxes, Conversion Boxes and Tapered Bearings

P/N	Application
7476217	Hyatt Journal Box 6 1/2 x 11
7476218	Hyatt Journal Box 6 1/2 x 12 Standard 3N1 Liner Hyatt
7476218-3PC	Journal Box 6 1/2 x 12 3-Piece Lug Liner
7476218MOD	6 1/2 x 12 Modified for GG Bearing



All Hyatt Boxes are Modified with the 3N1 Liner Standard



Hyatt & Conversion Box Lateral Pad 9539431 & PRD16184305



Hyatt W/3N1 Liner



9539431 Lateral Pad

9539431 Lateral Pad for all Hyatt and Generic Conversion Boxes for Locomotive axle.

PRD16184305 Manufactured 1/8" lower to ease installation due to restraints and tight fits.

### New and Unit Exchange GG Style Boxes

9539650	GG Adaptor Box (9580195)
9539431	Lateral Pad
PRD16184305	Lateral Pad 1/8" Undersize
G41D7277667G5	GG Adaptor Box



9529903



9529931

7482827	Cover w/Pipe Plug
7491289	Cover with Axle Gen Hole
8148707	Adaptor Extension for Axle Generator
9529931	Bracket Shock Lower
9529903	Bracket Shock 3 Axle



7491289



8148707



112192

### Journal Box Shims

P/N	Application	P/N	Application
8455980 (Fig A)	1/8 Inch	8455982 (Fig B)	1 Inch
8177292 (Fig A)	3/8 Inch	8112192 (Fig B)	1 1/4 Inch
8455981 (Fig B)	1/2 Inch	8455983 (Fig B)	1 1/2 Inch
8044686 (Fig B)	3/4 Inch	8223384 (Fig B)	1 3/4 Inch



Fig A



Fig B

### Full Line of Remanufactured Locomotive & Freight Bearings

Type	Size	Capacity - Tons
D	5 1/2 x 10	50 - Passenger
E	6 x 11	70 - Passenger
F	6 1/2 x 12	100 - Passenger
G	7 x 12	125
EE	5 1/2 or 6	Passenger
GG	6 1/2 or 6 7/8	Locomotive





## LOAD BOXES

### Complete Line of Custom-made Load Boxes

#### Custom Load Boxes

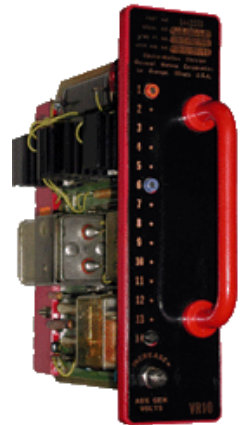
- 2,000HP Load Box with (4) grids and (1) 36hp fan
- 3,000HP Load Box with (6) grids and (2) 18hp fans
- 4,000HP Load Box with (8) grids and (2) 18hp fans



## MODULES

### Complete Line of Custom-made Load Boxes

<u>Type</u>	<u>Description</u>	<u>Type</u>	<u>Description</u>
AN17	ANNUNCIATOR	PF29	PERFORMANCE CONTROL
DE12	DYNAMIC BRAKE EXT. RANGE CONTROL	RC12	RATE CONTROL
DG12	DYNAMIC BRAKE GRID PROTECTION	SA10	SAND CONTROL
DP12	DYNAMIC BRAKE PROTECTION	SB11	SENSOR BY-PASS MAX PERFORMANCE
DR20	DYNAMIC BRAKE REGULATOR	SE13	SENSOR
EL11	EXCITATION LIMIT CONTROL	TH14	THROTTLE RESP & VOLT REFERENCE
GV12	GENERATOR VOLT REGULATOR	TR12	TRANSITION CONTROL
GX12	GENERATOR EXCITATION REGULATOR	VR14	VOLTAGE REGULATOR
PF17	PERFORMANCE CONTROL	WS10	WHEEL SLIP



G17FD and G17FL Style - Blue Electronic Cards  
Regulators and Complete Aux Panels



# BRYTE CHOICE | AFRICA

INTERNATIONAL IMPORTERS AND EXPORTERS OF ENGINEERING MERCHANDISE  
SINCE 1986

## NAME PLATE & NUMBERING

Complete Line of Nameplates, Locomotive Numbers & Signs of All Shapes & construction

Description	Sign Size	P/N
Sign Engine Water Drain Inside	3 x 9	PP50035-131
Sign Emergency Brake Valve	4 3/8 x 8 3/8	PP50035-59
Sign Engine Water Fill	4 3/8 x 8 3/8	PP50035-6
Sign Emergency Fuel Cut-Out	2 1/2 x 6	PP50035-61
Sign Danger 600 Volt	4 3/8 x 8 3/8	PP50035-67
Sign Emergency First Aid Kit	5 x 11	PP50035-7
Sign Fire Extinguisher Inside	6 x 12	PP50035-72
Sign Sanitary Drain Pipe	4 7/8 x 9 1/8	PP50035-9

We will Custom Manufacture any Sign



## PIPE CLAMP BRACKETS

Complete Line of Pipe Clamp Brackets

Ref #	Pipe O.D.	Length	Pipe or Tube
8108110	1/4"	2 1/2"	Tube
8108299	1/4"	4"	Tube
8108111	3/8"	2 1/2"	Tube
8108118	3/8"	4 1/2"	Pipe
8108202	3/8"	4 5/16"	Tube
8108113	1/2"	2 1/2"	Tube
8108115	1/2"	3"	Pipe
8108116	1/2"	3"	Pipe
9329413	1/2"	3"	Pipe
8108125	1/2"	3"	Pipe
8108117	1/2"	3 7/8"	Pipe
8108206	1/2"	4"	Tube
8104470	1/2"	4"	Pipe
8108114	5/8"	2 3/4"	Tube
8108209	5/8"	4 1/2"	Tube
8108126	3/4"	3 1/4"	Pipe
8327561	1"	3 1/2"	Pipe
8108127	1"	3 1/2"	Pipe
8108129	1 1/2"	4 3/8"	Pipe
8108201	1/4"	8 1/4"	Tube
8108118	3/8"	4 1/2"	Pipe
8108202	3/8"	4 5/16"	Tube
9318029	3/8"	5 9/16"	Tube
8236518	3/8"	6 5/16"	Tube
8236518	3/8"	6 5/16"	Tube
8108197	1/2"	6 5/8"	Pipe
8108208	1/2"	8 3/8"	Tube
8155268	1/2"	8 5/8"	Pipe
8108209	5/8"	4 1/2"	Tube
8108211	5/8"	8 7/16"	Tube
8108214	3/4"	8 3/4"	Tube
8108217	1"	8"	Pipe
8108219	1 1/4"	4 1/2"	Pipe
8108129	1 1/2"	4 3/8"	Pipe
8108241	2 1/2"	7 5/8"	Pipe





# BRYTE CHOICE | AFRICA

INTERNATIONAL IMPORTERS AND EXPORTERS OF ENGINEERING MERCHANDISE  
SINCE 1986

## PRIME MFG-SUN VISORS, MIRRORS, ENGINE PROTECTORS AND RECIRCULATING TOILETS

Complete Line of Prime Manufacturing Components

<u>P/N</u>	<u>Description</u>
Engine Protectors	<i>See Page 31</i>
9550240	Sun Visor - Ball Mounted
9331382	Sun Visor - Straight Mount
40006334	Sun Visor - Straight Mount
8370302	Mirror with Bottom Deflector
SC875-32	Mirror Right or Left Mount General Purpose Switchers - Road Units
9573201	Mirror Engineer 5 x 8" Left Hand
9573200	Mirror Engineer 5 x 8" Right Hand
PM118-5	Toilet Stainless Steel



## HEAT EXCHANGERS RADIATORS, OIL COOLERS, PRE-HEATERS, INTERCOOLERS AND AFTER-COOLERS

Complete Line of New and "True Blue™" Unit Exchange Heat Exchangers

- ISO certified and Caterpillar Bronze
- Certified Tier 1 EPA Certified Products
- Custom Design and Manufacturing Strengths
- Extended Warranty

<u>P/N</u>	<u>Description</u>
40036275	Single 6 Row
40017114	Triple 6 Row
40017115	Double 6 Row
D4MB	Double 4 Row
T4MB	Triple 4 Row
S8MB	Single 8 Row
D8MB	Double 8 Row
T8MB	Triple 8 Row
Quad8	Quad 8 Row
G41D711033G10	31" Radiator No Tanks
G41D701689P2	31" Radiator With Tanks
G41D712040G4	42" Radiator No Tanks
G41R971400G9	42" Radiator With Tanks



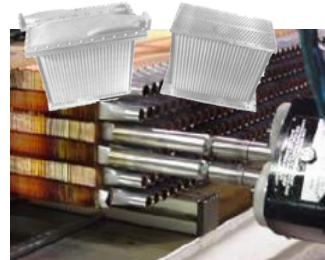
<u>P/N</u>	<u>Description</u>
9544027	SW1500 Bundle Tubes
9339040	4" MB Oil Cooler Core
8364030	4" MB Oil Cooler Core WITH Case
9514842	6" MB Oil Cooler Core
9558515	6" MB Oil Cooler Core WITH Cas
9577200	PreHeater - Standard GP Style 60K
40057079	PreHeater 60K BTU SD70
G84D702217P1	PreHeater
8288974	10 Row AfterCooler 2 Pass 2 Flange
8409891	10 Row AfterCooler 2 Pass 2 Flange
40020885	12 Row AfterCooler 4 Pass 2 Flange
40113591	12 Row AfterCooler 4 Pass 4 Flange
G128X1649	Intercooler Right - Long
G128X1650	Intercooler Left - Long
G128X1692	Intercooler Right - Short
G128X1693	Intercooler - Left Short
9087321	Radiator Cap 2 Prong
9323490	Radiator Cap 3 Prong
9338780	Rad Cap 3 Prong 20PSI
8039994	2 5/8" X 8" Rad Hose



PRD16184458 Coolant Test Kit Rust Inhibitor



Mechanical Head Completed



Mechanical Bonding Heads



Pressure & Leak Tested - Quality is #1

**EMERGENCY**

8386654 Emergency Leak Stopper  
0.75OZ Containers in Stock



# BRYTE CHOICE | AFRICA

INTERNATIONAL IMPORTERS AND EXPORTERS OF ENGINEERING MERCHANDISE  
SINCE 1986

## PINS - BUSHINGS - SLEEVES CLEVIS - LINERS, ETC.



## PRESSURE SWITCHES

Complete Line of New and Unit Exchange Pressure Switches, Sensors, Transducers and Valves



## CAB SUPPORT ITEMS

Complete Line of Cab Support Items including Refrigerators, Fans and Hotplates

<u>P/N</u>	<u>Application</u>
ME4130 1.5 Cu Inch	Stainless Refrigerator 110Volt with Bulit In Invertor
ME4170 2.5 Cu Inch	
ME804	Cab Fan 74 VDC Single or Dual Speed
PMC945G	1000W 3 Switch 10" Dia.
9509437	Cup Handset Hangup
8145407	Coat Hook



## RESISTOR GRIDS

Complete Line of Braking Resistor Grids

<u>P/N</u>	<u>Resistance</u>
8304194, 40085144	.927 Ohms
8304193, 40085145	.860 Ohms
8347464, 40085146	.922 Ohms
8339532	1.072 Ohms
8339533	.970 Ohms
9337613	.642 Ohms
9337614	.689 Ohms
9331050, 9191050	.923 Ohms
9331051	860 Ohms
8185703, 40085141	.660 Ohms
8185704, 40085142	.660 Ohms
8185705, 40085143	.690 Ohms
8190834	.690 Ohms

<u>P/N</u>	<u>Resistance</u>
40010556	.860 Ohms
40010557	.860 Ohms
40010558	965 Ohms
40010559	.632 Ohms
40010560	.766 Ohm





# BRYTE CHOICE | AFRICA

INTERNATIONAL IMPORTERS AND EXPORTERS OF ENGINEERING MERCHANDISE  
SINCE 1986

## ROOTS BLOWERS

**\*New and UX Roots Blowers Available**

P/N	Application
8379666	NEW Roots - Right Hand
8379667	NEW Roots - Left Hand
8379666UX	UX Roots - Right Hand
8379667UX	UX Roots - Left Hand



All Rebuilt Roots Blowers are Bench Tested



All Scrolls Are Precision Balanced



8028594 Quill Shaft



8189438 Housing



8206553 Bearing



8369675 Bearing



8028466 Thrust Washer



8204451 End Plate



8065752 Gear Cover

## ROCKER ARMS AND VALVE BRIDGES

**Complete Line of New and "True Blue™" Rocker Arms and Valve Bridges for 567, 645 and 710 Type Engines**

567 Light Injector - 8456128

567 Light Exhaust - 8328694

645 Injector - 9319504 or 9319504HH 645

Exhaust - 9319505 or 9319504HH

### Replacement Parts

9319504 Rocker Injector

9571921 Bushing

9571597 Roller

8031925 Button Retaining Spring

8328695 Body only



8085260 - Valve Bridge Old Style  
40126370/40145929 - Valve Bridge New Style



40052184HH - 645 Heavy Heavy Complete Set

### Valve Bridge Gauge Forks

8107788 0.0625

40146269 0.140

40146267 0.060

40146268 0.100



### Replacement Parts

8054088 Bridge

8068791 Spring

8028126 Seat

8028136 Ring

8052307 Button

8085254 Lash Adjuster



# BRYTE CHOICE | AFRICA

INTERNATIONAL IMPORTERS AND EXPORTERS OF ENGINEERING MERCHANDISE  
SINCE 1986

## SAND NOZZLES

Complete Line of Sand Nozzles

<u>P/N</u>	<u>Description</u>	<u>Application</u>
8328553	Sanding Nozzle	EMD Style
8328938	Sanding Nozzle	EMD Style
G84C615855P1	Sanding Nozzle	GE Style
G41C625615P1	Sanding Nozzle	GE Style
G41B545256P1	Sanding Nozzle	GE Style



## SAFETY LINE

Complete Line of Safety Products



## SAND RELATED

Complete Line of Sand Related Support Items

<u>P/N</u>	<u>Sand Valves</u>	<u>Application</u>
8320347	Shut-Off No Flange	
8320349	Shut Off With Flange	
9097530	Sand Hose 25 Foot	
8328950	Sand Hose 50 Foot	
8374760	Sand Hose Clamp	
8348109	Sand Trap 1 1/4 Inch	
8498335	Sand Valve Relay	

<u>P/N</u>	<u>Description</u>	<u>Application</u>
8355568	Universal Guide	EMD & GE
8355569	Left Universal Guide	EMD & GE
8133933	Right Sand Pipe Guide	Left Front
8133932	Sand Pipe Guide	Right Front
8269587	Sand Trap	EMD Style
8349902	Sand Trap	EMD Style
8350356	Sand Trap	EMD Style
10539205	Sander Guide Assembly	EMD Style



## SAFETY CONES

Complete Line of Sand Related Support Items

<u>P/N</u>	<u>Application</u>
8379666	NEW Roots - Right Hand
8379667	NEW Roots - Left Hand
8379666UX	UX Roots - Right Hand
8379667UX	UX Roots - Left Hand



Lime or Orange  
Plain No Strip  
3M One Strip  
M Dual Strip  
18" with 3 Lbs Base  
28" with 7 Lb Base  
36" with 10 Lb Base



# BRYTE CHOICE | AFRICA

INTERNATIONAL IMPORTERS AND EXPORTERS OF ENGINEERING MERCHANDISE  
SINCE 1986

## SAFETY VESTS



- ANSI/ISEA 1007-2004 Class 2 Certified
- 5 Point Tear Away for Snagging Safety
- 100% Flame Resistant
- 3M Reflective Strips
- Washable

\*5 Velcro points on vest allow for easy removal if caught in mechanical operation tear-away points on each shoulder, each side, and in the center.

P/N	Description	Application
8328553	Sanding Nozzle	EMD Style
8328938	Sanding Nozzle	EMD Style
G84C615855P1	Sanding Nozzle	GE Style
G41C625615P1	Sanding Nozzle	GE Style
G41B545256P1	Sanding Nozzle	GE Style

## SAFETY DRAIN MAT

Seals drains, grates, sewer, etc. against Fuel and Chemical Spills. Durable, Impact resistant 100% Polyurethane.



36" x 36" x 1/2"  
Standard Size  
Custom Sizes & Rolls Available



We also carry Emergency Spill Kits  
Rail Version 3 1/4 Lbs  
Lightweight for rapid response and ease of operation

## SAFETY - WORK GLOVES

Complete Line of Work Gloves for Any Application and Protection



Rubber



Leather



Mechanics

## SAFETY - FIRST AID KIT



First Aid Kit For Any Onboard Accidents and Injuries

## SAFETY - HEARING PROTECTION

Premium Hearing Protection for Demanding Applications

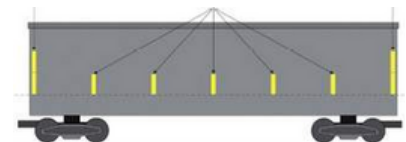
- Innovative Flexible Bands offers
- Better Fit & Greater Comfort
- Optimal Band Size "One Size Fits All"
- Optimal Fit & Hearing Protection with
- 3 sets of Buds for precise Ear fits
- Durable Construction for Durability
- and Contamination Resistant



## SAFETY - FRA-224 REFLECTIVE TAPE

Complete Line of 3M® FRA Tape

- 4" x 150 Foot Rolls
- Kiss Cut or Continuous Roll
- White - Yellow - Fluorescent Yellow Colors







## SAFETY LINE

### Complete Line of Track Mats and Pad

#### Track Mat - Coldform 2

PRD16185004-19

- 19"x100' for outside of track
- Qty 1 - 1 case (2 rolls per case)

PRD16185004-57

- 57" x 100' for inside of track
- Qty 1 - 1 case (1 roll per case)

PRD16185004-SET

- 1 case of both sizes



#### Sorbent Socks - Maintenance & Oil Only

PRD16185036-0

- 3 Inch Diameter x 4 Foot Length
- 30 socks per case
- WHITE - absorbs oil only

PRD16185036-WO

- 3 Inch Diameter x 4 Foot Length
- 30 socks per case
- GREY - absorbs oil and water



#### Sorbent Pads and Rolls - Oil-Only Medium Weight

PRD16185035-PAD

- 15 inch x 18 inch pad
- 100 pads per case
- WHITE - absorbs oil only

PRD16185035-ROLL

- 30 inch x 150 roll
- WHITE - absorbs oil only



#### Sorbent Pads and Rolls Maintenance Med. Weight

PRD16185034-PAD

- 15 inch x 18 inch pad
- 100 pads per case
- GREY - absorbs oil and water

PRD16185034-ROLL

- 15 inch x 18 inch pad
- 100 pads per case
- GREY - absorbs oil and water



## SAFETY LINE

### Safety Starter Sling

Our Starter Safety Sling has been designed to help make replacement of locomotive starters both a Safe and Efficient practice

#### Starter Safety Sling Features

- 400 LB Weight Capacity
- Heat Resistant Up To 360° F & Chemical Resistant X-Pattern Stitching For Extra Reinforcement
- Safety Yellow Material
- Our sling can be used on all 32 and 64 volt starters

P/N: PRD16184407



Safety Lift



Safety Install



Safety Release



# BRYTE CHOICE | AFRICA

INTERNATIONAL IMPORTERS AND EXPORTERS OF ENGINEERING MERCHANDISE  
SINCE 1986

## SAFETY LINE

Complete Line of Sure-Foot Inc. Products

### Facility Safety

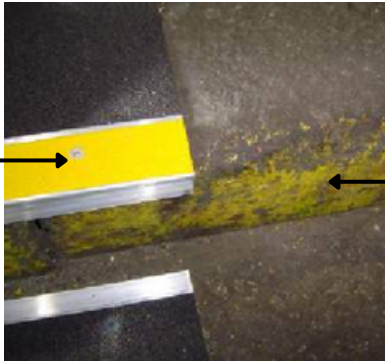
Facility Safety Solution for Facility Worn Stairs. Our Power Safe Aluminum Treads Install over Damaged or Unsecure steps



Before



After



PowerSafe Solution Provided

Damaged Concrete Step

Custom Made for ANY Size Step

Custom Made for Any Locomotive Pit  
Up to 10 Foot Lengths

ANY WIDTH

Visually Enhances Dangerous Areas

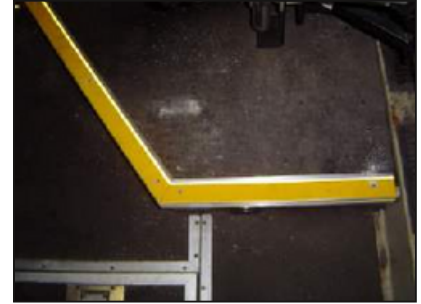


## LOCOMOTIVE SAFETY

Introducing the PowerSafe Safety Aluminum Treads design  
Exclusively for Injury Prevention on Locomotives



SD70AC Cab Steps



SD70AC Engineer Side



SD70AC Conductor Side

DESIGNED AS KITS



Other Sure-Foot Products  
Safety Adhesive Back Tread Signs



# BRYTE CHOICE | AFRICA

INTERNATIONAL IMPORTERS AND EXPORTERS OF ENGINEERING MERCHANDISE  
SINCE 1986

## SEATS - SWITCHERS

Complete Line of Seats for Switchers

- Narrower, shorter seat for Switcher applications
- Rugged heavy-gauge tubular steel construction
- Infinitely adjustable backrest angle
- 2-Way adjustable lumbar support
- Fire-resistant black vinyl material
- Full foam bolsters W/contoured lumbar support
- Integral spring supported cushion for shock isolation
- 6-Inch fore and aft seat adjustment



<u>P/N</u>	<u>Application</u>
P183049CD37	Switcher Mid Back Standard
P183049CD37ARM	Switcher Mid Back With Arm
P180837	Ultra Low Back
P180837ARM	Ultra Low Back With Arm

## SEATS - ROAD UNITS

Complete Line of Seats for Road Units

- Rugged heavy-gauge tubular steel
- 2-way adjustable lumbar support
- Infinitely adjustable backrest angle
- Fire-resistant Vinyl Material (Cloth Optional)
- Cushion rake angle adjustment
- 2-inch forward adjustment on seat cushion
- Full foam bolsters with contoured lumbar support
- Integral spring supported cushion for shock isolation
- 9-inch fore-and-aft seat adjustment
- ABS plastic back protector W/placard attached



<u>P/N</u>	<u>Application</u>
P180109CD37	High Back Non Sleeper
P176025PS	Floor Mount 4" Height Adjustment
P178241PS	Wall Mount With Swivel 3" Height

## SLACK ADJUSTERS

Complete Line of Locomotive Slack Adjusters and Brake Rigging

<u>P/N</u>	<u>Application</u>
9334230	SW Style
9334229	GP Style Clasp Brake
40042095	GP Style
40039040	SD Style
40039041	SD Style
G41C619252G1	GE
G41C612181G1	GE
G41C614411G2	GE



<u>P/N</u>	<u>Application</u>
8465284	Connection Strap, OE or Mod. 42" Wheels
8099416	Connection Strap, OE or Mod. 42" Wheels
8044913	Switcher - 2 or 3 Hole Strap
9527279	GP Trucks, Single Shoe Brakes
9516057	Slack Adjuster Assembly, Long
9513003	Slack Adjuster Assembly, Short

## SIMULATORS



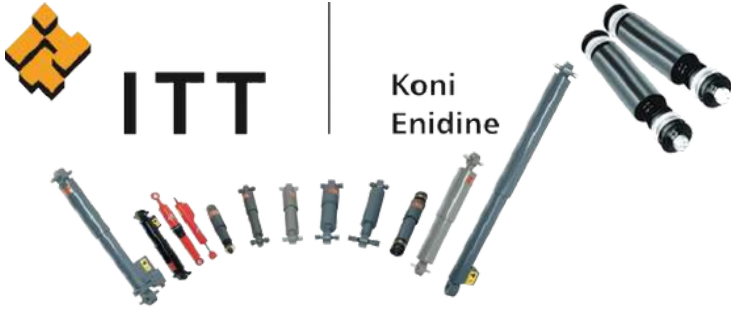


# BRYTE CHOICE | AFRICA

INTERNATIONAL IMPORTERS AND EXPORTERS OF ENGINEERING MERCHANDISE  
SINCE 1986

## SNUBBERS - SHOCK ABSORBERS - DAMPERS

Complete Line of Shock Absorbers and Snubbers manufactured by Enidine & Koni



### Common Stock Items

P/N	Description
4974695	Shock Lateral
4993721	Shock
40020355	Damper Yaw
40031527/40087597	Shock Combo End
40122566	Damper
40086732	Damper
40088065	Damper Yaw
40153054	Damper Vertical
40153061	Snubber
40153062/22012514	Shock
G41A244100AAP	Snubber
G41C624176P1	Snubber
G41A319100P	Damper Axle
G41A319101P	Damper Lateral
G41A319102P	Damper Vertical

\*Also Carry Shock Mount Plates



9529931



9529903

## SPARK ARRESTORS

Complete Line of Spark Arrestors For Any Locomotive. Custom or Standard Design



Locomotive Spark Arrestors Application

P/N	Application	Qty Required
10AC8	EMD SW-1	1
10AC10	EMD NW-2	2
10AC10	EMD NW-5	2
10AC12	EMD SW-8	1
10AC10	EMD SW7/9	2
10AC12LP	EMD SW-900	1
10AC12LP	EMD SW-1200	2
12AC12LP	EMD SD-7	2
12AC12LP	EMD SD-9	2
12AC12LP	EMD E-7	2
12AC12LP	EMD E-8	2
12AC12LP	EMD E-9	2
12AC12LP	EMD GP7	2
12AC12LP	EMD GP9	2
10AC10	EMD GP10	4
12AC12LP	EMD GP18	2
12AC12LP	EMD GP28	2
12AC12LP	EMD GP38	2

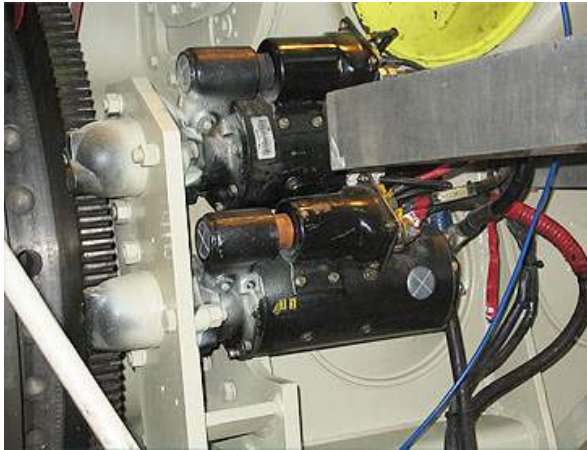


# BRYTE CHOICE | AFRICA

INTERNATIONAL IMPORTERS AND EXPORTERS OF ENGINEERING MERCHANDISE  
SINCE 1986

## STARTER MOTORS

Complete Line of New and our "True Blue™" Series Unit Exchange Starter Motors Utilizing OEM Delco Remy Enhanced Parts



Starters are Failing Prematurely Due to The AESS Application

### AESS Enhancement

- Special Brushholder
- Heavier Copper Armature
- Special High Current Solenoid
- Special Copper Brushes



### P/N

8384834/199033332

### Description

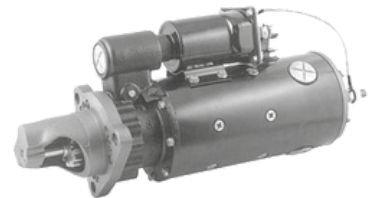
Volt Starter

8384834/1990333AESS32

Volt AESS\*

8428605/199374064

Volt Starter



8428605/1993740AESS64

Volt AESS\*

10478827/40069492AESS32

Volt AESS SD70 Series



The UNIQUE Austart Air Starters are proven in Rail, Marine, Mining, Power Generation, Drilling and Gas Compression markets with great results holding up under the most demanding environments.



Call us for our Full Line of Air Starters  
New OEM Style, Light weight Low Air consumption.



8387359PRD  
Starter Cover  
Ask about our Enhanced Starter Shield



9358874  
Starter Bracket

## SNOW PLOW TRACTION MOTOR BRASS

"PowerBlade" manufactured by Avoca Rail Products Universal Design fits most Locomotives



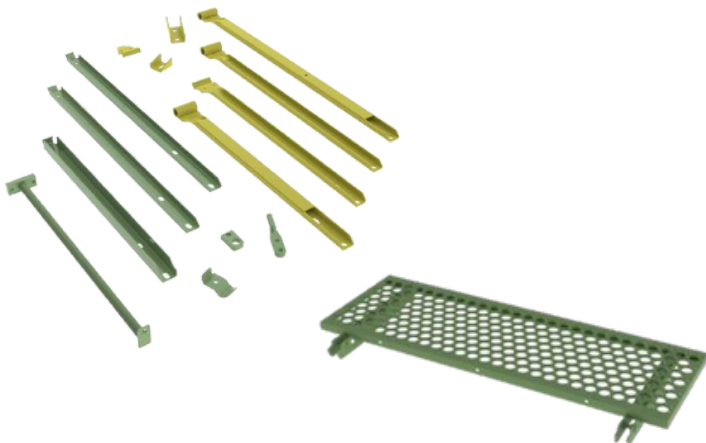
100% USA built at a competitive price.



## SUPPORTS - HANDRAILS , FEET AND BRACKETS

Complete Line of Supports, Handrails, Feet and Brackets

<u>P/N</u>	<u>Description</u>
9092557	Support Handrail 23.50"
8258472	Support Handrail 36.75"
8361180	Support Handrail 36.75"
8368491	Support Handrail 41.75"
8379948	Support Handrail 41.75"
8379949	Support Handrail 41.75"
8379953	Support Handrail 41.75"
9553636	Support Handrail 41.75"
8313482	Support Handrail 43.75"
8331857	Support Handrail 43.75"
8355621	Support Handrail 43.75"
8216378	Support Handrail 45.75"
8304234	Support Handrail 45.75"
8344827	Support Handrail 49.375"
8379950	Support Handrail 51.375"
8379951	Support Handrail 51.375"
8389882	Support Handrail 52.75"
8313798	Support Handrail 53.375"
8331849	Support Handrail 54.75"
8315142	Support Handrail 56.75"
8379947	Support Handrail 56.75"



## SHIMS AND SPACERS

Complete Line of Shims and Spacers

<u>P/N</u>	<u>Description</u>
G41A210731P4	.062" Shim Air Compressor
8478477	Shim Axle Cap
40014450	.031" Shim Bearing Flange For Combo's
8061581	.015" Shim Bearing to Bracket
8083559	.020" Shim Bearing Plate
8156922	Shim 11 Gauge
8159285	.063" Main Generator Mounting
8159286	.125" Generator Mounting
8178082	.004" Shim Roots Blower
8194923	.625" Frame Cover and Support
8348671	.014" AR10 Shim
8478477	.010" Shim Axle Cap
8348667	AR10 11Ga
8348668	AR10 16Ga
8348669	AR10 20 Ga
8348670	AR10 24 Ga
8348671	AR10 0.14"
8348672	AR10 .005"





**SUPPORT BEARING -  
TRACTION MOTOR BRASS**

Complete Line of Premium Brass Support  
Bearings



<u>P/N</u>	<u>Description</u>
9557789	8" Standard
9557790	8" 1/32" U.S.
9557791	8" 1/16" U.S.
9557792	8" 3/32" U.S.
9557793	8" 1/8" U.S.
9557794	8" Std. 1/32" OS Flange
9557797	8 1/4" Standard
9557798	8 1/4" 1/32" U.S.
9557799	8 1/4" 1/16" U.S.
9557800	8 1/4" 3/32" U.S.
9557801	8 1/4" 1/8" U.S.
G41B535757G6	9" Standard
G41B535757G7	9" 1/32" U.S.
G41B535757G8	9" 1/16" U.S.
G41B535757G9	9" 1/8" U.S.
G41B535757G10	9" 3/16" U.S.



**SWITCHES**

Complete Line of Switches

<u>P/N</u>	<u>Description</u>	
8296748	Switch Roller Button 1NC - Throttle - Single End Faston Connection	
8296750	Switch Slide Roller Button - Controller Mechanism - Single End Faston	
8296752	Switch Roller Button 1NC - Controller Mechanism - Single End Faston	
8330133	Slide Switch Button Generator Field 1 NO with Double End Faston	
8330137	Slide Switch NO - Lights Engine Room, HV Cab Walkway	
8455355	Slide Switch 2 NO - Ditch Light With Seal Wire	
9097525	Slide Switch - 1 NO and 1 NC with Single End Faston Tab - Start, Head, Light	
8481166	Slide Switch - 2 NO - Fuel Pump - With Double End Faston Tab Connections - Light	
9333939	Slide Switch - 2 NO - Fuel Pump - With Double End Faston Tab Connections	
9096836	Rocker Switch-Double Pole, Single Throw	
8299162	Roller Switch-Manual Roller Lever 10A 120VDC	
8117872	Pressure Switch-Open at 20lbs, Closed at 35lbs.	
8301186	Pressure Switch-Cut in 130PSI, Cut Out 140PSI	
8334998	Pressure Switch-Cut in 10 PSI, Cut Out 15 PSI	
8340775	Pressure Switch-Open at 40lbs, Closed at 20lbs	
8425022	Pressure Switch-1st Stage, Open at 130PSI, Closed at 140 PSI 2nd Stage-Open at 135 PSI, Closed at 145 PSI.	
8425056	Pressure Switch-3 Pole Receptacle	
8283936	Temperature Switch-In at 170°, Out at 155°	
8424290	Temperature Switch-In at 174°, Out at 159°	
8425575	Temperature Switch-In at 215°, Out at 205°	
8457270	Temperature Switch-In at 175°, Out at 160°	
8457492	Temperature Switch-In at 185°, Out at 170°	

\*The Above List is a Sample of The Switches We Offer.



**SWITCHES - ROTARY**  
Complete Line of Rotary Switches

<u>P/N</u>	<u>Description</u>
8204906	Cab Heater 4 Position 1 Pole 10A 125V
8351224	Cab Heater 4 Position 1 Pole 10A 125V
8276486	Cab Heater 4 Position 3 Pole 10A 125V
8238108	Signal Light 4 Position 8 Pole 10 Amp 125 V.A.C.
8314947	Sequence Test Panel 2 Position 8 Pole 10 Amp 125 V.A.C.
8272931	Sequence Test Panel 3 Position 5 Pole 10 Amp 125 V.A.C.
8440928	Module Test Panel 3 Position 5 Pole 20 Amp 600 V
8332070	Fuel Prime and Engine Start 3 Position 4 Pole 10 Amp 125 V.A.C.
834625	Fuel Prime and Engine Start 3 Position 5 Pole 10 Amp 125 VAC
8441983	Fuel Prime and Engine Start 3 Position 6 Pole 20 Amp 600 V
8242197	Headlight 2 Position 4 Pole 30 Amp 250 V.A.C
8277638	A,C, Terminal Light 2 Position 2 Pole 30 Amp 250 V.A.C.
8287557	Signal Light 2 Position 5 Pole 30 Amp 250 V.A.C
8238109	Remote Head Light 4 Position 4 Pole 30 Amp 250 V.A.C
8370683	Manual Power Red 3 Position 3 Pole 10 Amp 125 V.A.C.
8345702	Traction Motor Cut-Out Switch 4 Position 10 Amp 125 V.D.C.
8336232	Traction Motor Cut-Out Switch 5 Position 10 Amp 125 VDC
8348980	Traction Motor Cut-Out Switch 5 Position 10 Amp 125 V.A.C.
8332834	Hostlers Control Switch 1 Position 10 Amp. 74 V.D.C,
G41A313736P2	SBM Rotary Switch
G41A313738P1	3 Position Rotary Switch



Rotary Switch Handles

<u>P/N</u>	<u>Description</u>
8189077	Switch Handle 1/4" O.D. Shaft
8168346	Screw For Rotary Switch Handle 1/8-40 x 11/32
8168328	Pin For Rotary Switch 3-48 x 1/2"
131181	Washer Lock #6







**SWITCHES - ROTARY**  
Complete Line of Rotary Switches

<u>P/N</u>	<u>Description</u>
8356487	Traction Motor Cut-Out Switch 4 Position 10 Amp 125 V.A.C.
8435590	Signal Light 2 Position 1 Pole 30A 125V
8460767	Remote Headlight 3 Position 1 Pole 30A 230V
9083195	Ac Terminal Light 2 Position 2 Pole 30A 500V
8298939	Heater 3 Position 2 Pole 30A 230V
8237656	Directional Headlight 5 Position 2 Pole 30A 230V
8485569	Slug Control 2 Position 4 Pole 10A 125V
8437642	Heater 4 Position 4 Pole 30A 74V
8484926	Heater 4 Position 4 Pole 30A 125V
8243533	Remote Headlight 4 Position 4 Pole 30A 230V
6923315	Unit Selector 4 Position 4 Pole 30A 500V
8439118	Remote Headlight 4 Position 4 Pole 45A 600V
8422024	Heater 8 Position 5 Pole 30A 230V
8206315	Isolation 2 Position 6 Pole 30A 500V
6916566	Isolation 2 Position 8 Pole 30A 500V
8330988	Isolation 2 Position 8 Pole 30A 500V
8433191	Isolation 2 Position 9 Pole 45A 600V
8484096	Isolation 2 Position 10 Pole 45A 600V
10589900	Rotary Snap 5 Position 2 Pole
G41A314126P1	Motor Cutout Rotary Switch
G84A201850P11	Headlight Rotary Switch



Rotary Switch Handles

<u>P/N</u>	<u>Description</u>
8193318	Switch Handle 3/8" O.D. Shaft
132037	Screw For Rotary Switch Handle 10-24 x 7/16"
8193814	Pin For Rotary Switch 1/8 x 3/4"
8256115	Washer Lock #10





# BRYTE CHOICE | AFRICA

INTERNATIONAL IMPORTERS AND EXPORTERS OF ENGINEERING MERCHANDISE  
SINCE 1986

## TERMINAL BOARDS

Complete Line Terminal Boards for all  
Electrical Applications

P/N	Connection Type	Tabs
8298162	Fast-On Single Sided	4
8434754	Fast-On Single Sided	6
8467946	Fast-On Single Sided	8
8287076	Fast-On Single Sided	12
8283970	Fast-On Single Sided	15
8410147	Fast-On Single Sided	16
8277744	Fast-On Single Sided	20
8324824	Fast-On Single Sided	22
8292938	Fast-On Single Sided	24
8368473	Fast-On Single Sided	24
9331353	Fast-On Double Sided	20
9507683	Bolted Double Sided	8
8354091	Bolted Single Sided	8
8422649	Bolted Single Sided	12



## TOOLS

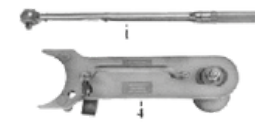
Complete Line of Tools



**T50031**  
The T50031 kit was designed to make the job of torqueing crab nuts easier while providing accurate torque results. It is comparable to our 8408219



**T57870-115V**  
The T57870-115V offer excellent and uniform torqueing of EMD Style power assembly crab nuts. It comes with a 1 1/8" hydraulic powered electric driven power unit rated at 9,000 PSI. It also comes with a 25 feet hose assembly, two wheel cart, and two socket torque. The wrench head is adjustable from 500 to 3,500 lb. ft. of torque.



**T54101 - Crab Nut Tool**  
The T54101 is the manual kit for torqueing EMD Style crab nuts.



**8239562**  
Installer/  
Remover Bushing



**8243341**  
Hand Tool  
Breaker  
Traction Motor  
Leads



**8243341**  
PRD Enhanced  
2-Piece



**8116358**  
Lifter  
Cylinder  
Liner



**8171633PRD**  
Carrier Snap  
Ring  
Enhancement



**8417858**  
Lifter Power  
Assembly



**T57211 Tool and  
T57211B for Bolts**  
EMD Style Power  
Assembly Break  
Loose Jacking  
Tool



**8075894**  
Cylinder Head  
Puller



**8339610**  
Rack Setting



**87170**  
C Frame Tool  
Power Asslys  
Compressor Aux.  
Generators



**8432485**  
Jack  
Governor  
Injector



# BRYTE CHOICE | AFRICA

INTERNATIONAL IMPORTERS AND EXPORTERS OF ENGINEERING MERCHANDISE  
SINCE 1986

## TRACTION MOTORS

Complete Line of "True Blue™" Series Traction Motors, New and Remanufactured.  
We also offer a Full Line of Unit Exchange Combo's



- Class 1 Approved
- Internationally Approved •Regionals & Short Line Approved Quality M-1003 approved Parts
- Quality Workmanship
- Experienced Staff
- Technical Support
- Competitive Price
- Full Line Support Products

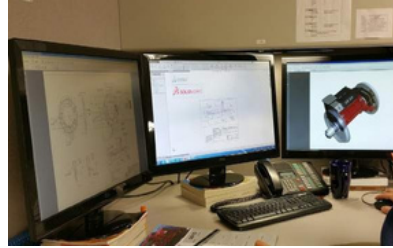


D27/D37/D47	D57/D67	D77/D77B	D78	D87/D87B	D90
752E6	752E8	752 AF	752AG	752AH	GEB



### Complete Line of 100% New GE-Style & EMD-Style Traction Motors

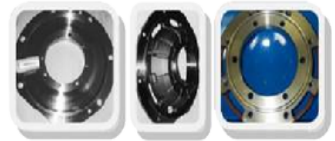
#### Utilizing our M-1003 AAR OEM Verification Process



SolidWorks CAD System  
Engineering Staff

- Product Development
- Enhanced Designs
- Failure Analysis

- Axle Caps
- Bearing Caps & Housings
- Flingers & Seals
- Frames
- Shafts
- Commutator & Armature
- Shims, Spacers, Sleeves, Laminations





# BRYTE CHOICE | AFRICA

INTERNATIONAL IMPORTERS AND EXPORTERS OF ENGINEERING MERCHANDISE  
SINCE 1986

## TRACTION MOTORS

Complete Line of 100% New GE-Style & EMD-Style Traction Motors



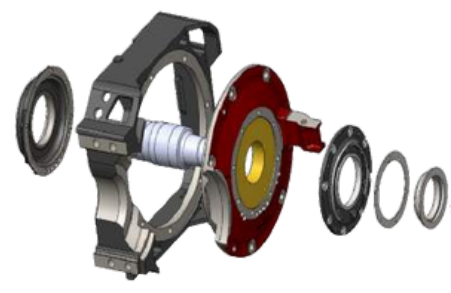
Narrow



Gauge BTR or Axle Cap



Gauge BTR or Axle Cap



Standard



Eliminate Brass & Wick

\*Significant Cost/Labor Savings



Competitive cost for converting Brass Support to BTR U Tube Design using new and or remanufactured components.



### Domestic Models

- 5GE747
- 5GE751
- 5GE752
- 5GE761
- 5GE763
- 5GE764

### International Models

- 731 and 761 Series





# BRYTE CHOICE | AFRICA

INTERNATIONAL IMPORTERS AND EXPORTERS OF ENGINEERING MERCHANDISE  
SINCE 1986

## D77-STYLE TRACTION MOTOR SUPPORT ITEMS

### Common Production Stock Parts

#### Oil Filler Cap

- Redesigned to stop leaks
- Seal repositioned under head
- Upgraded B-SureSeal™ O-Ring  
3/4" Yellow 1" White



<u>P/N</u>	<u>Description</u>
8104188	Nose Support Plate
8104189 / 9087386	Nose Spring Holder Pack
8126036	Safety Strap
8322027	T-Bolt Safety Strap
8326203	Gearcase Cap - Grease
8407505	Clamp MS Gearcase
40051181	Gearcase Install Kit Grease/Oil
40061419	Gearcase Seal Oil
40017436	Filler Cap
8407506	Dust Guard CE

<u>P/N</u>	<u>Description</u>
9333024PRD	3/4" Oil Filler Cap - LEAK PROOF
9324109PRD	1" Oil Filler Cap - LEAK PROOF
8417729	D77 Brushholder
9322058	D77 Carbon Brush
9323317	Seal Ring Oil 8"
8277771	Wick Lubricator
9535375	Seal WS
9535376	Seal MS
40006705	15T Pinion
40012790	Pinion Seal



<u>P/N</u>	<u>Description</u>
9583736	D77 Connector Crimp Type1325/24
9583737	D77 Connector Crimp Type1100/24
9583735	D77 Connector Crimp Type1480/24

<u>P/N</u>	<u>Description</u>	<u>P/N</u>	<u>Description</u>
8341414	EMD Air Duct Assembly	10661110	Insulator Sleeve
8350968	TM Sleeve 1.5ID x 14 5/8 Lg TM	10664863	SD70 Sleeve Insulating
8194450	Sleeve 1.2ID x 12 1/2 lg EMD	9520160	Rubber Faston
8024365	Switcher Air Duct Cable Cleat	9334248	Traction Nose Pack
40111584	D87/D90	9096902	Sleeve Kit
9094306	Cable Cleat D77	8206883	Hi Temp Grommet
8474056	Cable Cleat	G41B532099G1	GE 752 Cable Cleats
9087386	Nose Pack Fabricated	8243341	TM Cable Splitters



**752-STYLE TRACTION MOTOR SUPPORT ITEMS**

Common Production Stock Parts

752E8-Style Traction Motor

<u>P/N</u>	<u>Description</u>
G41A238534P1	Oil Fill Cap
G41B535245G1	Seal Ring 9" Oil
G41B537189P1	Dust Seal ME
G41B537190P1	Gutter/Seal WS
G41B537191P1	Gutter/Seal ME
G41B537266P1	Dust Guard CE
G41B537963P1	Brush
G41C632068G1	Wicks Lubricator Only
G41D731488G1	Inspection Cover Bottom
G4748663G1	Inspection Cover Top
G160X1026	Gearcase Install Kit - Grease
41C632667G6	Brushholder - Radial
18T - 20T - 22T	Pinions

752AG-Style Traction Motor

<u>P/N</u>	<u>Description</u>
G41A238534P1	Oil Fill Cap
G41B535245G1	Seal Ring 9" Oil
G41C636752P1	Gutter
G41C636752P1	Gutter
G41B537963P1	Brush
G41D711633P	GE 752AG Air Duct
G41C635696G1	Wicks Lubricators Assy Complete
G41C636159G23	Inspection Cover Bottom
G41C636160G2	Inspection Cover Bottom
G41C636881G1	Inspection Cover Top
G160X1067	Gearcase Install Kit - Oil
G41C632667G6	Brushholder - Radial
18T - 20T - 22T	Pinions

Oil Filler Cap

- Redesigned to stop leaks
- Seal repositioned under head
- Upgraded B-SureSeal™ O-Ring 3/4" White

752AF-Style Traction Motor

<u>P/N</u>	<u>Description</u>	<u>P/N</u>	<u>Description</u>
G41A238534P1	Oil Fill Cap	G41C635696G1	Wicks Lubricator Assy
G41B535245G1	Seal Ring 9" Oil	G41C637106P1	Seal ME
G41B535795G1	Spring Cap - Grease	G41A235215P3	Clamp Dust Guard
G41B535882P2	Dust Seal Motor	G41D731488G1	Inspection Cover Bottom
G41B535883P2	Gutter Motor Side	G4748663G1	Inspection Cover Top
G41B535885P2	Gutter Wheel Side	G752AF-Set	Gearcase Install Kit - Grease
G41B537266P1	Dust Guard CE	G41C632667G	Brushholder Radial
G41B537307P1	Flinger Ring CE	G41C633771G2	Brushholder - Reaction
G41B537466P1	Lip Seal - Gearcase	18T - 20T - 22T	Pinions
G41B538243P1	Filler Cap	G160X1067	Gearcase Install Kit - Oil



## TERMINAL LUGS

### Complete Line of Terminal Lugs

#### Glad Hand Terminal Lugs

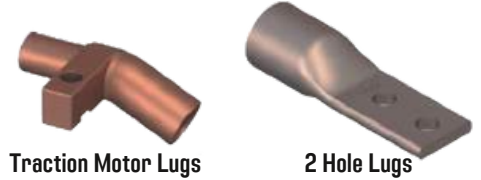
P/N	Description
8109922	0.938" ID, 775/24, 1100/24 Solder Type
8160270	1.000" ID, 5.312 Long, 1325/24 Solder Type
8137331	1.1875" ID, 5.312 Long, 1600/24 Solder Type
9583737	.938" ID, 5.312 Long, 1100/24 Crimp Type
9583736	.984" ID, 5.312 Long, 1325/24 Crimp Type
9583735	1.030" ID, 5.312 Long, 1480/24 Crimp Type
40028834	1.094" ID, 5.55 Long, 1600/24 Crimp Type

#### 2 Hole Terminal Lugs

P/N	Description
G41A201820P1	3 3/4" OD, 11/32 Bolt, 925/24 Cable
G8868241AAP1	2 15/16" OD, 5/15 Bolt, 113/27 Cable
G8868241AAP2	2 5/8" OD, 5/16 Bolt, 113/24 Cable
G8868241AAP14	3 3/16" OD, 5/16 Bolt, 550/24 Cable
G8868241AAP16	3 3/16" OD, 5/16 Bolt, 775/24 Cable
G8868241AAP17	3 3/4" OD, 3/8" Bolt, 925/24 Cable
G8868241AAP18	3 3/4" OD, 3/8" Bolt, 1100/24 Cable

#### Insulated Crimp Terminal Lugs with Stud Hole

P/N	Description
8123282	0.250" ID, 1/4" Stud Hole, Yellow, 12-18AWG
8189218	0.170" ID, #6 Stud Hole, Blue, 14-18AWG
8210498	0.170 ID, #10 Stud Hole, Blue, 14-18AWG
8198189	0.170" ID, 1/4" Stud Hole, Blue, 14-18AWG
8123281	0.170" ID, #10 Stud Hole, Yellow, 12-18AWG
8123283	0.250" ID, 5/16" Stud Hole, Yellow, 12-18AWG
8123284	0.250" ID, 3/8" Stud Hole, Yellow, 12-18AWG



Traction Motor Lugs

2 Hole Lugs

#### Non Insulated Crimp Terminal Lugs with Stud Hole

P/N	Description
G41A265615P10	No 8 or 10 Stud, 10-22 Awg
10634854	Tongue 12-14AWG, Yellow, #10 Stud Size
8131368	0.284 ID, 3/8 Stud Hole, #4 AWG
8269635	0.120" ID, #10 Stud Hole, 16-22AW
8281475	0.180" ID, #10 Stud Hole, 14-18AWG
8282623	0.180" ID, 1/4" Stud Hole, 14-18AWG
8292367	0.192" ID, 1/4" Stud Hole, 10-14AWG
8292368	0.192" ID, #8/10 Stud Hole, 10-12AWG
8301545	0.192" ID, 3/8" Stud Hole, 10-14AWG
9098813	0.393" ID, 5/16" Stud Hole, 225/24 AWG

#### Non Insulated Crimp Terminal Lugs

P/N	Description
8118060	0.650 ID, Blank Stud Hole, 550/24 AWG
8118061	0.762" ID, Blank Stud Hole, 775/24 AWG
8118062	0.895" ID, Blank Stud Hole, 1100/24 AWG
8160274	0.984" ID, Blank Stud Hole, 1325/24 AWG
8352379	1.100" ID, Blank Stud Hole, 1600/24 AWG

#### Butt Connector Terminal Lugs

P/N	Description
8188705	0.984" ID, 4.625" Long, 1325/24
8188705	0.984" ID x 4.625" Long, 1325/24
8188706	1.100 ID x 1.340 x 4.62 Long, 1600/24

#### Battery Terminal Lugs

P/N	Description
8197509	0.880" ID, 13/32" Stud Hole, 4/0 Cable
8211044	0.806" ID, 13/32 Hole, Flat Tongue 3/0 Wire
8183110	0.880" ID, 13/32" Stud Hole, 4/0 Cable



Butt Connector Lugs

Gladhand Lugs

Traction Motor Lugs



**TRACTION MOTOR CABLES**

Complete Line of traction motor cables available for shipment when necessary

<u>P/N</u>	<u>Description</u>	<u>Application</u>
9565453	Traction Motor Cable	No. 1 to No. 2 - 20 3/4" Long
9565450	Traction Motor Cable	No. 1 to No. 2 - 21 3/4" Long
8351147	Traction Motor Cable	No. 1 to No. 4
8355704	Traction Motor Cable	No. 1 to No. 2
9319807	Traction Motor Cable	No. 1 to No. 2 and No. 3. to No. 4
9565451	Traction Motor Cable	No. 3 to No. 4 - 20 3/4" Long
8355728	Traction Motor Cable	Cable Assembly "A"
9319806	Traction Motor Cable	Cable Assembly "A"
9566056	Traction Motor Cable	Cable Assembly "A"
9566664	Traction Motor Cable	Cable Assembly "A"
40017962	Traction Motor Cable	Cable Assembly "AA" 87" Long
8141062	Traction Motor Cable	Lead Assembly "AA" 7' 2 1/2" Long Cable
9566057	Traction Motor Cable	Assembly "AA" 7' 4 11/16" Long Cable
9566661	Traction Motor Cable	Assembly "AA" 7' 4 11/16" Long Lead
8141063	Traction Motor Cable	Assembly "F" 6' 10" Long
40017961	Traction Motor Cable	Cable Assembly "F" 7' 5/8" Long
9566058	Traction Motor Cable	Cable Assembly "F" - 7' 5/8" Long Cable
9566662	Traction Motor Cable	Assembly "F" - 7' 5/8" Long
40017963	Traction Motor Cable	Cable Assembly "FF" 76" Long
8141064	Traction Motor Cable	Lead Assembly "FF" 6' 3" Long
9566059	Traction Motor Cable	Cable Assembly "FF" - 6' 7 3/16" Long Cable
9566663	Traction Motor Cable	Assembly "FF" - 6' 7 3/16" Long



New Flexible 3Kv Traction Motor Kit and Cables

- Easy to Install
- Very Flexible
- Longer Life & Reliable
- Lower cost in Long Run
- 3KV 200 Celsius vs. 2Kv 125 Celsius
- Class 1 approved



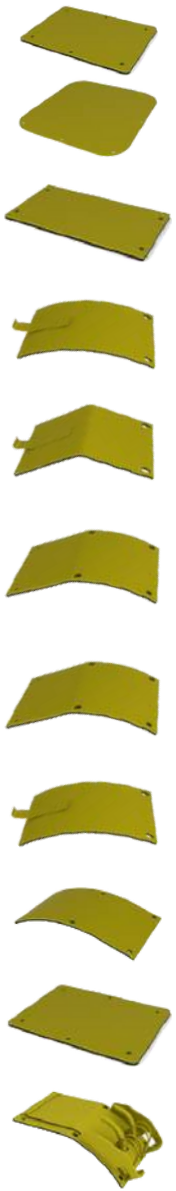




**TRACTION MOTOR COVERS**

**Complete Line of Traction Motor Covers MODIFIED with High Heat Rubber Gaskets**

P/N	Application(s)
8117405	D7, D17, D27, D37, D47, D57, D67, D75, D77, D87, D90
8117406	D7, D17, D27, D37, D47, D57, D67, D75, D77, D87, D90
8176280	D29
8183868	D7, D17, D27, D37, D57, D67, D75, D77
8204661	D7, D17, D27, D37, D47, D57, D67, D75, D77, D87
8204665	D7, D17, D27, D37, D47, D57, D67, D75, D77, D87
8235994 / 8236101	D29
8300010	D7, D17, D27, D37
8236103	D29
8300011	D7, D17, D27, D37, D57, D67, D75, D77
8300013	D7, D17, D27, D37, D47, D57, D67, D75, D77, D87, D90
8408599	D57, D67, D75, D77, D87, D90
8408688	D57, D67, D75, D77

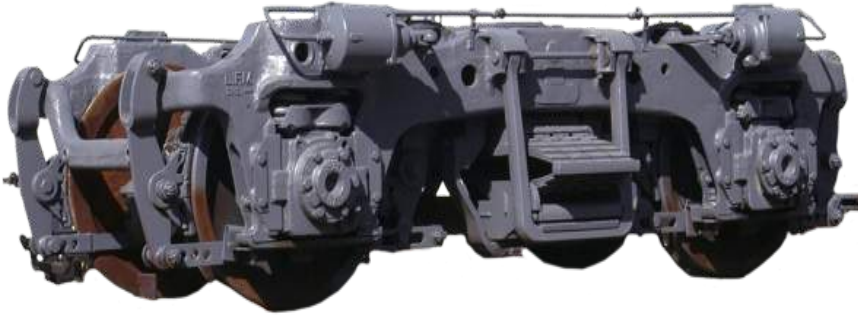


P/N	Application(s)
8467155	D57, D67, D75, D77
8467156	D57, D67, D75, D77
9554330 / 40007235	D87, D90
10520631	D90TR
G4732425G2 G41C636159G2	752AG, 752AH
G41C636160G2	752AH
G4732425G2	752E8, 752AF
G41C636881G1	752AG
G41D731488G1	752E8, 752AF
G4748663G1	752E8, 752AF
G41C637083G2	752AH
G6726556P1	752E8, 752AF
G9961549G1	752





## TRUCK ASSEMBLIES & PARTS



**GP TRUCK - BLOMBERG**  
Hyatt or GG Bearings  
Single or Clasp Brake Shoes  
Spring Bolster



**GP - BLOMBERG M**  
Hyatt or GG Bearings  
Single or Clasp Brake Shoes Suspension Pad  
Bolster



**EMD SWITCHER TRUCK**  
Friction or Roller Bearing Duplex Brake Cylinder

## **BUSHINGS**

Complete Line of Steel and Polymer Bushings



- 1/6th the weight of bronze
- Resistant to shock loading
- Low Friction
- Resistant to wear and abrasion
- Does not support marine growth
- Zero corrosion
- Impact Absorption
- Proven Field Test up to 10 year Life



No Torches Needed No Sledge Hammers Parts can be Reused



Installed Brake Head Bushings



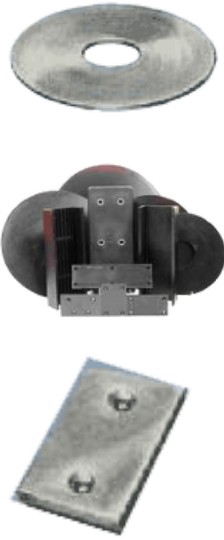
# BRYTE CHOICE | AFRICA

INTERNATIONAL IMPORTERS AND EXPORTERS OF ENGINEERING MERCHANDISE  
SINCE 1986

## CENTER PLATES, BOWL LINERS & PEDESTAL LINERS

Complete Line of Steel, Manganese and Special Molded Wear Parts for All Locomotives

<u>P/N</u>	<u>Description</u>	<u>P/N</u>	<u>Description</u>
9548794	Center Bowl Liner Style 2 axle rigid truck Assy (3/8"Thk)	9324108 / 4001004 / 40012413	EMD-style Pedestal Liner
9562813	Wear Bowl Liner Style 2 axle rigid truck Assy (1/2" Thick)	G41B515390P1 G41B515390P3	GE-style Pedestal Liner
9085368	Wear Bowl Liner 3/8" Bottom Plate Nylatron 17 7/8" Dia.	8206915	4" x 3" x 1/4" Nylon Plate
9085369	Center Bowl Liner Style Flexicoil truck Assy SD Series	8206916	5" x 2.625" x 1/4" Plate
8068060	GP Trucks - Wear Plate	8386454	5.25" x 2.75" x 1/4" Plate
8492124	Center Bowl Liner Style 3 axle truck Assy SD-2, SD50/60	8088354	10" x 3" x 1/4" Plate
G41C629423G1	Center Bowl Liner Fits GE Style 3 Axle "C" Trucks	8336782-3/8	3/8" Thick
G41C629424G1	Center Bowl Liner Fits GE Style 2 Axle "B" Trucks	8336782-3/4	3/4" Thick
9329633	Center Wear Plate GP Trucks - 1/2 Ring	40010820	SW/GP/SD Trucks - Pedestal Liner Kit with Fastener



## COIL AND ELLIPTICAL LEAF SPRINGS

Complete Line of Coil Springs and Leaf Springs

<u>P/N</u>	<u>Application</u>	<u>P/N</u>	<u>Application</u>
9549172	Double Coil	8229325	Elliptical Leaf Spring
8228050	Double SD40	8354463	Elliptical Spring Assembly Set
8057051	Spring Outer	9568083	GP Trucks - Elliptic Spring Nest Assembly (Low Profile)
8057052	Inner Middle	9085317	GP Trucks - Double Coil Journal Spring Assembly
8057053	Spring Inner	8020225	GP/SD Trucks - Traction Motor Air Duct
8106539	Elliptical Leaf Spring Set of 4	40020765	GP/SD Trucks - Journal Spring Pad



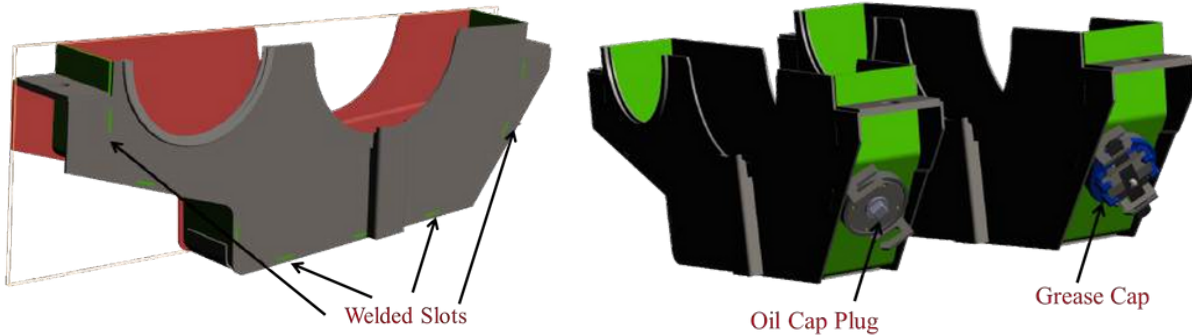


## GEARCASES

### Complete Line of Grease & Oil Gearcases

#### PowerLok Oil & Grease Filled Gearcases

#### PowerLok Combination Oil / Grease Filled Gearcases



#### Tab and Slot Design

- 100% Slot Alignment For Better Fit and Operation
- Strengthens the Seams for Heavy Impact Resistance
- More Welding Points Improved Integrity and Strength
- CNC Robotic Welder Provides Stronger Welds vs. That of Contemporary Welds
- CNC Robotic Welder Provides Less Heat Which Lowers Fatigue Typically Found on Contemporary Welds \*Patent Design - Mechanical and Electro Mechanical

\*Patent Design - Mechanical and Electro Mechanical

#### Dual Cap Purpose

- Cap Drilled and Pinned to Prevent Improper Use

**\*Enhanced Strength Patented Design  
Drastically Reduces Derailment Damage**

#### Benefits

- Full Line of PowerLok Oil & Grease Gearcases
- Less Inventory with Combination Oil/Grease Design (Standard Style Also Available) Reduction in Hazard Material Spills
- Reduction in Down Time Due to Small Derailments
- Increased Reliability and Service Life

#### Our New CNC Robotic Welder provides:

- Stronger welds vs. that of contemporary welds
- Less heat which lowers fatigue typically found on contemporary welds

